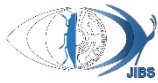


Original Article 

Annotated catalogue of the tortoise beetles (Coleoptera: Chrysomelidae: Cassidinae) from Indonesia with additional faunistic data from Museum Zoologicum Bogoriense

Anang Setyo Budi ¹  | Jolanta Świętojańska ² 

¹ Museum Zoologicum Bogoriense, Research Center for Biosystematics and Evolution, National Research and Innovation Agency 16911 Cibinong, Bogor, West Java, Indonesia.

² Department of Biodiversity and Evolutionary Taxonomy, University of Wrocław, Przybyszewskiego 65, 51-148 Wrocław, Poland. Email: jolanta.swietojska@uwr.edu.pl

Corresponding author: Anang Setyo Budi | [✉ anan013@brin.go.id](mailto:anan013@brin.go.id)<https://zoobank.org/urn:lsid:zoobank.org:BDF0C3C4-F2D5-4ED9-BFDA-E94E62B86CF8>**Academic Editor**

Hiva Naserzadeh

Received

December 16, 2025

Revised

April 17, 2026

Accepted

April 29, 2026

Published online

June 08, 2026

ABSTRACT. An annotated catalogue of tortoise beetles from Indonesia is presented. This catalogue is a compilation of published records and examined specimens from the Museum Zoologicum Bogoriense (MZB). A total of 146 species representing 14 genera are documented, including 30 new island records and eight new country records for Indonesia. Verified distribution data, taxonomic records, and relevant references are provided for each species. This contribution updates the record of Cassidinae in Indonesia and integrates scattered literature and museum records. This data provides a foundation for future taxonomic and faunistic studies of this group in the region.

KEYWORDS: Checklist, distributional records, Insect diversity, leaf beetles, Museum collections

Citation: Budi, A.S. & Świętojańska, J. (2026) Annotated catalogue of the tortoise beetles (Coleoptera: Chrysomelidae: Cassidinae) from Indonesia with additional faunistic data from Museum Zoologicum Bogoriense. *Journal of Insect Biodiversity and Systematics*, 12 (03), 577–611.

INTRODUCTION

The subfamily Cassidinae Gyllenhal, 1813, which includes both the former Hispinae and the tortoise beetles (Cassidinae sensu stricto), is one of the most diverse groups of leaf beetles. Globally, the group includes about 6,400 described species, making it the second largest subfamily in Chrysomelidae (Borowiec 1999a; ITIS, 2025). The group shows a wide range of body forms and feeding behaviors, from flattened leaf-miners to shield-like species with hardened exoskeletons (Chaboo 2007). Many cassidine species are still poorly understood. Several species are known only from their original descriptions and have been misidentified in the literature because the type specimens were never re-examined (Sekerka 2016). Although a global catalogue exists, more work is needed to improve the accuracy of species identifications, especially in tropical regions (Borowiec 1999a; Świętojańska 2001b; Borowiec & Świętojańska 2024).

Indonesia is one of the most biologically diverse countries in the world. Recognized as a global biodiversity hotspot, it hosts both Oriental and Australasian faunal elements (Myers et al. 2000). The country encompasses a variety of forest types with high species endemism (von Rintelen et al. 2017). However, the Cassidinae of Indonesia are still poorly known. Most published studies focus on a single island or cover only a small area, leaving many data gaps (Borowiec 1990a, 1999b; Noerdjito & Nakamura 1999; Świętojańska 2001a, 2002; Borowiec 2006; Świętojańska 2006; Budi & Świętojańska

2025). Research on Cassidinae collections in Indonesian museums is also still very limited (Kimoto et al. 1995; Budi & Świętojańska 2025). Indonesia likely harbors a significant number of cassidine species and distributional records that have yet to be documented.

In this work, we compile an annotated catalogue of Cassidinae from Indonesia, based on published literature, examined museum specimens, and recent field collections. The catalogue provides updated distributional data, taxonomic records, and relevant faunistic information, aiming to support future research on the taxonomy and biodiversity of tortoise beetles.

MATERIAL AND METHODS

Taxonomic and distribution data were compiled based on published literature, field collections, and examination of museum collection specimens. Species identifications were verified through comparison with original species descriptions, taxonomic revisions, and authoritative catalogues. Classification of Cassidinae follows Borowiec (1999a) and Borowiec & Świętojańska (2024), including recent additions and corrections proposed by Sekerka & Świętojańska (2024). Genera and species are organized by tribe and sorted alphabetically. Information on new records, material examined, general distribution, local distribution by island, and remarks are provided. A single asterisk (*) denotes a new island-level record within Indonesia, whereas a double asterisk (**) indicates a new country record for Indonesia.

Cassidinae specimens from Indonesia in the collections of Museum Zoologicum Bogoriense (MZB) were examined. Label data are transcribed verbatim from specimen labels, including original date formats, spelling, and geographic information. Where possible, the updated geographical location is included in parentheses to facilitate geographical interpretation. A comma (,) separates different information within the same label, while semicolon (;) separate different specimens. The examined material is arranged as follows “localities, year, collector, collection method”. The number of examined specimens is indicated at the beginning of each entry. Photos of habitus were captured using a Leica® DMC4500 digital camera attached to a Leica® Z6 APO stereomicroscope (Leica Microsystems, Heerbrugg, Switzerland), and processed using Leica Application Suite (LAS) version 4.8.0.

Distributional information is divided into two categories. The local distribution section summarizes published records within Indonesia, arranged by locality and accompanied by the corresponding literature citations in parentheses. Records derived from the present study are explicitly indicated as “current study” to distinguish them from previously published data. The general distribution section provides a concise overview of the species’ broader geographic range beyond the focal local scale, listing countries or major regions where the species has been recorded. This separation allows a clearer distinction between detailed national records and the overall biogeographic distribution. General distribution information for each species is based on data published in scientific catalogues and the online catalogue Cassidinae of the World – An Interactive Manual (Coleoptera: Chrysomelidae) (Borowiec 1999a; Borowiec & Świętojańska 2024; Sekerka & Świętojańska 2024; Gupta et al. 2025). The remarks section includes additional information on each species, particularly notes on locality names, including their original usage and meanings in local languages, when applicable.

RESULTS

Class Insecta Linnaeus, 1758

Order Coleoptera Linnaeus, 1758

Suborder Polyphaga Emery, 1886

Superfamily Chrysomeloidea Latreille, 1802

Family Chrysomelidae Latreille, 1802

Subfamily Cassidinae Gyllenhal, 1813

Tribe Cassidini Gyllenhal, 1813

Subtribe Aspidomorphina Chapuis, 1875

Genus *Aspidomorpha* Hope, 1841

Type species. *Cassida miliaris* Fabricius, 1775, by original designation.

Aspidomorpha Agassiz, 1846:16; 1848:104 (unjustified emendation); *Iphinoe* Spaeth, 1898:540 (Type species. *Iphinoe ganglbaueri* Spaeth, 1898, by monotypy; not Bate, 1856); *Spaethia* Berg, 1899:79 (replacement name for *Iphinoe* Spaeth, 1898); *Weiseocassis* Spaeth, 1932:3 (Type species. *Aspidomorpha prasina* Weise, 1899, by original designation); *Megaspidomorpha* Hincks, 1952:336 (Type species. *Cassida chlorotica* Olivier, 1808, by monotypy; nomen nudum in Spaeth, 1943); *Dianaspis* Chen & Zia, 1984:80 (Type species. *Aspidomorpha denticollis* Spaeth, 1932, by monotypy).

Subgenus *Aspidomorpha* Hope, 1841

Aspidomorpha adhaerens (Weber, 1801) *

Material examined. 1 spec., INDONESIA. West Papua. Raja Ampat. West Waigeo. Gag Island. Tutturuga beach, 00°24'18"S, 129°51'43"E (Tutturuga Beach, Gag Island), 30.viii.2008, Coll. Woro AN. E. Cholik & Sarino, Sweeping; 1 spec., Isl. Halmahera Tolewang 50 m (Toliwang, Halmahera Island), 12–25.x.1951, Native collector; 1 spec., W. Irian, Sentani forest edge 100–150 m (Sentani, Papua Island), 26-iii-1973, Dulhaer; 1 spec., N. Moluccas S. BATJAN (South Bacan, Bacan Island), vi-vii 1953, A.M.R. Wegner; 1 spec., Kei Eil. Gn. Daab 300 m (Mount Daab, Kei Besar Island), iv-1922, H.C. Siebers.

Local distribution. Ambon (Borowiec 1999a); Aru Archipelago (Simon Thomas 1964; Borowiec 1992); Bacan (Boheman 1862; Simon Thomas 1964); Biak (Simon Thomas 1964; Borowiec 1992); Buru (Simon Thomas 1964; Borowiec 1999a; Świętojańska 2001b); Kei Archipelago (Simon Thomas 1964; Borowiec 1992); Maluku (Świętojańska 2001b); Obi (Simon Thomas 1964); Papua (Simon Thomas 1964; Borowiec 1992); Seram (Simon Thomas 1964; Świętojańska 2001b); Sulawesi (Simon Thomas 1964; Borowiec 1999a; Świętojańska 2001b); Ternate (Simon Thomas 1964); Waigeo (Simon Thomas 1964); Yapen (Simon Thomas 1964; Borowiec 2001); *Current study* – Bacan, Gag (**new record**), Halmahera (**new record**), Kei Archipelago, Papua.

General distribution. Australia, Indonesia, Papua New Guinea, Solomon Islands.

Aspidomorpha amabilis Boheman, 1854 *

Material examined. 1 spec., Bawean Isl. (Bawean Island), 9.vi.1954, A. Hoogerwerf; 1 spec., Krakatau (Krakatau Island), 10.ix.1920; 1 spec., Kangean Arch. Petapan (Natural Forest, Kangean Island), 21.ix.1954, A. Hoogerwerf; 6 specs., INDONESIA, Bali Island, Bedugul, Candi Kuning 1190 m (Bedugul, Bali Island), 30.vi.1999, Coll. Woro A.N.; 1 spec., S. Sumatra P. Sebesi (Sebesi Island), 13.vi.1955, Leg. A.M.R. Wegner; 8 specs., INDONESIA, Jawa Barat Bogor, Selabenda – Jalan Baru (Bogor, Java Island), 8.ii.1994, Woro AA. Noerdjito; 1 spec., N.O. Sumatra Ciogoer Medan (Medan, Sumatra Island), x.1949, H.W. Naezer; 1 spec., Noesa Kambangan (Nusa Kambangan Island), 28.xi.1937, F.C. Drescher; 3 specs., Zuid Celebes Nanggala, 900 Mr. Rantepao (Rantepao, Sulawesi Island), viii.1938, F.C. Drescher; 1 spec., INDONESIA, NTB Lombok Timur, Sesaot 260 m (Sesaot, Lombok Island), 23.vi.1999, Coll. Woro A.N.; 2 specs., INDONESIA, NTB, Sumbawa, Alos, Pantai Putotano 15 m (Poto Tano, Sumbawa Island), 26.vi.1999, Coll. Woro A.N.

Local distribution. Halmahera (Spaeth 1926a); Java (Boheman 1854; Borowiec 1990a, 2001, 2009); Kalimantan (Borowiec 1990a); Lombok (Borowiec 1990a, 2001); Nusa Kambangan (Borowiec 1990a); Sulawesi (Borowiec 1990a); Sumatra (Spaeth 1926b); Sumba (Borowiec 1990a, 2009); Sumbawa (Borowiec 1990a, 2001); *Current study* – Java, Sumatra, Bawean (**new record**), Krakatau (**new record**), Kangean Archipelago (**new record**), Sebesi (**new record**), Nusa Kambangan, Sulawesi, Bali (**new record**), Lombok, Sumbawa.

General distribution. Indonesia, Philippines, India.

Aspidomorpha assimilis Boheman, 1854

Material examined. 1 spec., W. Java 100m Djasinga (Bogor, Java Island), 2.viii.1952, Leg. Manis; 1 spec., W. Sumatra 450 m. Loeboek Sikaping (Lubuk Sikaping, Sumatra Island), 1923, L. Hundeshagen; 1 spec., E. Borneo 95 m Gunungsari (Gunung Sari, Kalimantan Island), 20.Viii.1956, A.M.R. Wegner.

Local distribution. Java (Boheman 1854; Spaeth 1904; Maulik 1916; Borowiec 1990a; Świętojańska

2001b; Borowiec 2009); Kalimantan (Świętojańska 2001b); Mentawai Archipelago (Spaeth 1904; Borowiec 2009); Nias (Spaeth 1904; Borowiec 1990a; Świętojańska 2001b); Nusa Kambangan (Borowiec 1990a); Siberut (Borowiec 2009); Sumatra (Spaeth 1904; Maulik 1916; Borowiec 1990a, 2001; Świętojańska 2001b; Borowiec 2009); *Current study* – Java, Sumatra, Kalimantan.

General distribution. Indonesia, Malaysia, Thailand.

***Aspidomorpha aurata* (Montrouzier, 1856) ***

Material examined. 1 spec., INDONESIA, Irian Jaya Freeport Concession Timika (Timika, Papua Island), 15–22.ix.1997, R. Ubaidillah, Peggie.

Local distribution. Yapen (Borowiec 2009); *Current study* – Papua (**new record**).

General distribution. Indonesia, Papua New Guinea, Solomon Islands, New Caledonia.

***Aspidomorpha australasiae* (Boisduval, 1835)**

Material examined. 1 spec., INDONESIA, Irian Jaya Hutan Nafri – Jayapura (Nafri, Papua Island), 17–22.vii.1993, Coll. Y.R. Suhardjono.

Local distribution. Papua, Yapen (Borowiec 2009); *Current study* – Papua.

General distribution. Indonesia, Australia, Papua New Guinea, Solomon Islands.

***Aspidomorpha bataviana* Świętojańska 2001 ***

Material examined. 6 specs., NusaTenggara, Ds. Presan, Kec. Gunung Sari Kab. Lombok Barat (Gunungsari, Lombok Island), 8.xii.1999, Sri Hartini, Handling; 1 spec., Java Res. Cheribon N.O.I. Tjideres 100 m (Cideres, Majalengka, Java Island), II.1941, F.C. Drescher; 9 specs., INDONESIA, Bali Island Kuta Bali, Pantai Batu Beling (Batu Beling Beach, Bali Island), 2.vii.1999, Coll. Woro A.N.; 4 specs., INDONESIA, NTB Sumbawa, Peropak Alos 15 m (Moyo Hulu, Sumbawa Island), 26.vi.1999, Coll. Woro A.N.

Local distribution. Bali (Świętojańska 2001b); Java (Świętojańska 2001b; Borowiec 2009); Kalimantan (Świętojańska 2001b); Sulawesi (Borowiec 2009); Sumbawa (Borowiec 2009); *Current study* – Java, Bali, Lombok (**new record**), Sumbawa.

General distribution. Indonesia.

***Aspidomorpha biremis* Boheman, 1854 ***

Material examined. 3 specs., INDONESIA, Bali Island, Bedugul, Tabanan, Bali, Pasar Damau, Candi Kuning 1190–1200 m (Bedugul, Bali Island), 30.vi.1999, Coll. Woro A.N.; 6 specs., INDONESIA, West Java, Gunung Halimun National Park Cikaniki (Cikaniki Research Station, Java Island), 13.ix.1999, Woro A.N., Beating Tray.

Local distribution. Java (Boheman 1854; Borowiec 1990a, 2001; Świętojańska 2001b); Nusa Kambangan (Borowiec 1990a; Świętojańska 2001b); *Current study* – Java, Bali (**new record**).

General distribution. Indonesia.

***Aspidomorpha calligera* Boheman, 1854**

Material examined. 1 spec., INDONESIA, West Java Sukabumi, Situ Gunung 1000 m (Situ Gunung, Sukabumi, Java Island), 4.vii.1999, Coll. Woro A.N.; 1 spec., W. Sumatra 450 m. Loeboek Sikaping (Lubuk Sikaping, Sumatra Island), 1923, L. Hundeshagen.

Local distribution. Java (Boheman 1854; Borowiec 1990a, 2009); Kalimantan (Reid 1998); Nusa Kambangan (Borowiec 1990a); Sulawesi (Maulik 1919); Sumatra (Boheman 1854; Borowiec 2001); *Current study* – Java, Sumatra.

General distribution. Indonesia, Myanmar, Cambodia, Sri Lanka, China, Bhutan, India, Bangladesh, Pakistan, Laos, Nepal, Malaysia, Thailand, Vietnam.

***Aspidomorpha castaneipennis* Spaeth, 1912**

Material examined. 1 spec., E. Borneo 125 m Tabang Bengen River (Tabang, Kalimantan Island), 5.x.1956, A.M.R. Wegner.

Local distribution. Kalimantan (Spaeth 1912; Świętojańska 2001b); Nias (Spaeth 1912; Świętojańska 2001b); Sumatra (Spaeth 1912; Borowiec 1990a, 2001; Świętojańska 2001b; Borowiec 2009); *Current study* – Kalimantan.

General distribution. Indonesia, Malaysia, Brunei, the Philippines, Vietnam.

***Aspidomorpha chandrika* Maulik, 1918**

Local distribution. Sumatra (Spaeth 1926b; Borowiec 1999a).

General distribution. Indonesia, Myanmar, China, India, Laos, Thailand, Vietnam.

***Aspidomorpha deusta* (Fabricius, 1775) ***

Material examined. 4 specs., INDONESIA, West Nusa Tenggara, Ds. Kalang Anyar, Kab. Lombok Barat (Karang Anyar, Lombok Island), 4.xii.1999, Sri Hartini, Handling; 1 spec., INDONESIA Maluku, Morotai, South Morotai, Daeo Majiko, Ake Salera River, 00°63'45.98"N, 126°08'47.61"E (Daeo Majiko, Morotai Island), 8.ix.2019, S. Kahono & D. Peggie, Sweep Net; 1 spec., P. Bawean (Bawean Island), 1.ix.1965, Coll. Jahja; 1 spec., INDONESIA, North Maluku, Ternate, Moti, Tadenas Alt 19 m (Tadenas, Moti Island), 09.v.2010, Warsito A, Efend O; 16 specs., INDONESIA, W. Java, Kab. Bogor, Gunung Putri, Cagak, Alt. 250m (Gunung Putri, Bogor, Java Island), 13.ix.2000, Hanifah KS, Handling; 4 specs., INDONESIA, West Sumatra, Padang, Jl Bebas 95m (Padang, Sumatra Island), 07.xi.2001, S. Kahono.

Local distribution. Bali (Borowiec 1990a; Mohamedsaid 2006); Flores (Borowiec 1990a; Kimoto et al. 1995); Java (Borowiec 1990a; Kimoto et al. 1995; Mohamedsaid 2006; Borowiec 2009); Kalimantan (Mohamedsaid 2006); Komodo (Kimoto et al. 1995); Papua (Borowiec 1992); Siberut (Borowiec 2001); Sulawesi (Blanchard 1853; Boheman 1854); Sumatra (Nakamura & Abbas 1989; Mohamedsaid 2006; Borowiec 2009); Timor (Borowiec 1996); Wetar (Borowiec 2009); *Current study* – Java, Sumatra, Bawean (**new record**), Morotai (**new record**), Moti (**new record**), Lombok (**new record**).

General distribution. Indonesia, Australia, Malaysia, Papua New Guinea, the Philippines, Timor Leste.

***Aspidomorpha dulcicula* (Boheman, 1862)**

Material examined. 1 spec., E. Borneo 125 m Tabang Bengen River (Tabang, Kalimantan Island), I.IX.1956, A.M.R. Wegner.

Local distribution. Kalimantan (Boheman 1862); Sumatra (Borowiec 2009); *Current study* – Kalimantan.

General distribution. Indonesia, Malaysia, Philippines.

***Aspidomorpha elevata* (Fabricius, 1801)**

Material examined. 27 specs., INDONESIA, West Java, Bogor, Cibinong KM 46, near Widiasatwaloka Build (BRIN KST Soekarno, Bogor, Java Island), 16.vii.1999, Student Internship, Handling; 2 specs., Noord-Sumatra Allas-vallei ca. 450 Mr (Alas Hills, Kutacane, Sumatra Island), xi-1940, leg. K. Benner; 8 specs., INDONESIA, West Kalimantan Pontianak, Kab. Ketapang, Kecamatan Kendawangan (Kendawangan, Kalimantan Island), 24.v–22.vi.1993, Endang Cholik, Sweeping.

Local distribution. Java (Boheman 1854; Borowiec 1990a, 1999a, 2001); Kalimantan (Borowiec 1990a, 1999a); Mentawai Archipelago (Borowiec 2009); Nusa Kambangan (Borowiec 1990a); Sumatra (Boheman 1854; Borowiec 1990a, 1999a, 2001, 2009); *Current study* – Java, Sumatra, Kalimantan.

General distribution. Indonesia, Malaysia, Thailand, Philippines.

***Aspidomorpha furcata* (Thunberg, 1789) ***

Material examined. 1 spec., S. Sumatra P. Sebesi (Sebesi Island), 13.vi.1955, Leg. A.M.R. Wegner; 1 spec., Java.

Local distribution. Batu Archipelago (Borowiec 1990a); Java (Boheman 1854; Borowiec 1985, 1990a, 1996); Kalimantan (Reid 1997); Nias (Borowiec 1990a); Sumatra (Fabricius 1801; Boheman 1854; Borowiec 1990a, 1996, 2001, 2009); *Current study* – Sebesi (**new record**), Java.

General distribution. Indonesia, Bhutan, Myanmar, Cambodia, Sri Lanka, China, India, Nepal, Macau, Laos, Taiwan, Malaysia, Thailand, Vietnam.

Remarks. Specimens observed from Java were only labeled “Java” and determined by F. Spaeth.

***Aspidomorpha fuscopunctata* Boheman, 1854 ***

Material examined. 3 specs., Waai P. Ambon (Waai, Ambon Island), 18.vii.1959, Leg. A.M.R. Wegner; 9 specs., INDONESIA, West Java, Gn. Halimun National Park Sukabumi, Pelabuhan Ratu, Cikakak (Cikakak, Sukabumi, Java Island), 24.i.2000, Coll. Woro A.N & E. Cholik; 1 spec., Noesa Kambangan (Nusa Kambangan Island), 28.xi.1937, F.C. Drescher; 2 specs., W. Sumatra 450 m. Loeboek Sikaping (Lubuk Sikaping, Sumatra Island), 1923, L. Hundeshagen; 1 spec., E. Borneo 125 m Tabang Bengen River (Tabang, Kalimantan Island), 18.ix.1956, A.M.R. Wegner.

Local distribution. Buton (Borowiec 2009); Java (Boheman 1854; Borowiec 1990a, 1996, 2009); Kalimantan (Reid 1997); Nias (Borowiec 1990a); Nusa Kambangan (Borowiec 1990a); Sulawesi (Borowiec 1990a, 2001); Sumatra (Borowiec 1990a, 1996, 2001, 2009); *Current study* – Sumatra, Kalimantan, Java, Nusa Kambangan, Ambon (**new record**).

General distribution. Indonesia, Myanmar, China, India, Nepal, Laos, Malaysia, Philippines, Thailand, Vietnam.

***Aspidomorpha indica* Boheman, 1854**

Material examined. 1 spec., Sumatra W.K. Alahanpandjang 1500 m (Alahan Panjang, Sumatra Island), VI.1938, F. C. Drescher.

Local distribution. Sumatra (Borowiec 2001, 2009); *Current study* – Sumatra.

General distribution. Indonesia, Bangladesh, Myanmar, China, India, Nepal, Laos, Malaysia, Pakistan, Taiwan, Philippines.

***Aspidomorpha inquinata* Boheman, 1854 ***

Material examined. 1 spec., Wai Lima Z. Sum. Lampongs (Wai Lima, Sumatra Island), 11.xii.1921, Karny & Siebers; 1 spec., C.N. Java, 800 m Moeria Mts. Tjolo (Mount Muria, Java Island), 20–24.x.1939, M.A. Lieftinck.

Local distribution. Bali (Borowiec 1990a); Java (Boheman 1854; Maulik 1919; Borowiec 1990a); Lombok (Borowiec 1990a); *Current study* – Sumatra (**new record**), Java.

General distribution. Indonesia.

***Aspidomorpha limbata* (Goldfuss, 1805)**

Local distribution. Java, Sumatra (Spaeth 1914a); Selayar (Borowiec 1990a).

General distribution. Indonesia, Malaysia.

***Aspidomorpha maffinbayensis* Borowiec, 1992**

Local distribution. Papua (Borowiec 1992, 2001); Yapen (Borowiec 2001, 2009).

General distribution. Indonesia.

***Aspidomorpha miliaris* (Fabricius, 1775) ***

Material examined. 2 specs., INDONESIA Maluku South Halmahera, North Bacan, Makian, Around Airport. Alt: 9 mdpI (Makian Island), 6.ix.2019, S. Kahono & D. Peggie, Sweep Net; 1 spec., Bawean Isl.

(Bawean Island), 6.vi.1954, A. Hoogerwerf.; 5 specs., INDONESIA, West Sumatra, Padang, Jl. Bebas, 95 m (Padang, Sumatra Island), 07.xi.2001, S. Kahono; 24 specs., INDONESIA, Central Java, Ambarawa (Ambarawa, Java Island), 16.i.1999, Coll. Noerdjito, M.; 1 spec., INDONESIA, Central Java, Island Nusa Kambangan, Kab. Cilacap, Karangayer Alt: 107 m dpl (Nusa Kambangan Island), 31.vii.2004, Coll. Rosichon U. & Darmawan; 6 specs., E. Borneo 125 m Tabang Bengen River (Tabang, Kalimantan Island), 28.viii.1956, A.M.R. Wegner; 21 specs., INDONESIA, South Sulawesi, Bantimurung, Kab. Maros, 100 m (Bantimurung, Sulawesi Island), 23.v.2001, Coll. Woro AN & Puji A, Beating Tray; 10 specs., INDONESIA, BALI Bali Botanical Garden (Bali Botanical Garden, Bali Island), 29.xii.1999, Handling; 9 specs., INDONESIA, NTB Sumbawa, Peropak Alor 15 m (Moyo Hulu, Sumbawa Island), 26.vi.1999, Coll. Woro A.N.

Local distribution. Bali (Borowiec 1985, 1990a, 2001, 2009); Buton (Borowiec 2009); Flores (Hincks 1953; Borowiec 1990a, 2009); Java (Fabricius 1775; Boheman 1854; Borowiec 1990a, 2001, 2009; Ganjari 2016); Kalao (Borowiec 1990a); Kalimantan (Reid 1997); Lombok (Borowiec 1990a, 2001); Nias (Borowiec 1990a); Nusa Kambangan (Borowiec 1990a); Sulawesi (Blanchard 1853; Boheman 1854; Borowiec 2001, 2009); Sumatra (Gressitt 1939; Borowiec 1985, 1990a, 2001, 2009); Sumba (Hincks 1953); Sumbawa (Borowiec 2009); *Current study* – Makian (**new record**), Bawean (**new record**), Sumatra, Java, Nusa Kambangan, Kalimantan, Sulawesi, Bali, Sumbawa.

General distribution. Indonesia, Bangladesh, Myanmar, China, Hong Kong, India, Japan, Laos, Malaysia, Nepal, Timor Leste, Papua New Guinea, Pakistan, Philippines, Thailand, Vietnam.

***Aspidomorpha moluccana* Spaeth, 1935**

Material examined. 1 spec., Isl. Halmahera Goa Plains 50–100m (Halmahera Island), 9.ix–12.ix.1951.

Local distribution. Halmahera, Ternate (Spaeth 1935).

General distribution. Indonesia.

***Aspidomorpha mutilata* Boheman, 1854 ***

Material examined. 11 specs., INDONESIA, NTB Sumbawa, Batu dulang 740 m (Batu Dulang, Sumbawa Island), 27.vi.1999, Coll. Woro A.N.; 2 specs., INDONESIA, West Java Gunung Halimun National Park Cikaniki, altitude 950 m, 27.iv.1999 (Cikaniki Research Station, Java Island), Hiroshi Horiuchi, T. Ueno, M. Rofik Sofyan; 9 specs., INDONESIA, BALI K.R. Bali alt. 1000 m. (Bali Botanical Garden, Bali Island), 29.xii.1999, Woro AN, Handling; 7 specs., INDONESIA, NTB Lombok Timur, Jl. Pela Parang (Selaparang, Lombok Island), 28.vi.1999, Coll. Woro A.N.

Local distribution. Bali (Borowiec 1990a, 1996, 2001, 2009); Java (Boheman 1854, 1855; Spaeth 1914a; Borowiec 1990a, 2009); Lombok (Spaeth 1914a; Borowiec 1990a); Sumatra (Spaeth 1914a); *Current study* – Sumbawa (**new record**), Java, Bali, Lombok.

General distribution. Indonesia, Malaysia.

***Aspidomorpha novaeguineensis* (Boisduval, 1835)**

Material examined. 1 spec., N W New Guinea Sorong (Sorong, Papua Island), 8.vii–14.viii.1948, M. A. Lieftinck.

Local distribution. Aru Archipelago (Masters 1889); Papua (Borowiec 1992, 2001, 2009); *Current study* – Papua.

General distribution. Indonesia, Papua New Guinea.

***Aspidomorpha pacalis* Spaeth, 1926**

Local distribution. Tanimbar Archipelago (Spaeth 1926a); Yamdena (Borowiec 2009).

General distribution. Indonesia.

***Aspidomorpha ponderosa* Boheman, 1862**

Local distribution. Ambon (Boheman 1862; Spaeth 1914b); Buru (Spaeth 1926a); Seram (Spaeth 1914b; Borowiec 1990a).

General distribution. Indonesia.

***Aspidomorpha punctum* (Fabricius, 1801) ***

Material examined. 2 specs., Kei Eil Gn. Daab 300 m (Mount Daab, Kei Besar Island), iv.1922, H.C. Siebers; 1 spec., Waai P. Ambon (Waai, Ambon Island), 13.vii.1959, Leg. A.M.R. Wegner; 1 spec., INDONESIA, Irian Jaya Mimika Timur, Fakfak 150 m (Fakfak, Papua Island), 21.vi.1985, Anita H. Atmowidjojo; 1 spec., Aroe Is. Dobo (Dobo, Aru Island), vi.1933, M.E. Walsh; 1 spec., INDONESIA Maluku Seram Island, Kanike – Salumena, Mt. Binarta (Mount Binaiya, Seram Island), xi.1987, Native Collector.

Local distribution. Aru Archipelago (Borowiec 1992); Biak (Borowiec 1992); Liki (Borowiec 1992); Papua (Borowiec 1992, 2001, 2009); Seram (Borowiec 2001, 2009); Waigeo (Borowiec 2009); Yapen (Borowiec 2009); *Current study* – Kei Archipelago (**new record**), Ambon (**new record**), Papua, Aru Archipelago, Seram.

General distribution. Indonesia, Papua New Guinea, Australia.

***Aspidomorpha sanctaecrucis* (Fabricius, 1792)**

Material examined. 27 specs., INDONESIA, D.I. Yogyakarta, Congot, Kulon Progo (Congot Beach, Kulon Progo, Java Island), 20.ii.1999, Woro A. Noerdjito, Handling; 4 specs., S.E. Borneo Ampah, 0–20 m (Ampah Kota, Kalimantan Island), iv–v.1948, L. S. Liang.

Local distribution. Kalimantan (Gressitt 1939); Java, Seram (Borowiec 1990a); Sumatra (Borowiec 2009); *Current study* – Java, Kalimantan.

General distribution. Indonesia, Bangladesh, Myanmar, Bhutan, Cambodia, Sri Lanka, China, India, Laos, Malaysia, Nepal, Pakistan, Thailand, Vietnam, Philippines.

Remarks. The MZB collection specimen from Java is probably an introduced species. The specimen from Kalimantan is abberatio *insularis*.

***Aspidomorpha sarasinorum* Spaeth, 1932**

Local distribution. Sulawesi (Spaeth 1932; Borowiec 2001).

General distribution. Indonesia.

Aspidomorpha sarawacensis* Spaeth, 1904 *

Fig. 1

Material examined. 1 spec., INDONESIA, Kalimantan Barat, 4 km N. Putussibau (Putussibau, Kalimantan Island), 11–12.vii.1996, Chris Reid.

Local distribution. *Current study* – Kalimantan (**new record**).

General distribution. Indonesia, Malaysia.

***Aspidomorpha suavis* Spaeth, 1912**

Material examined. 2 specs., INDONESIA, E. Kalimantan Kec. Pujungan, Kayan Mentarang Nat. Reserve (Kayan Mentarang National Park, Kalimantan Island), x.1993, per. DC Darling Rosichon U.

Local distribution. Kalimantan (Borowiec 2009); *Current study* – Kalimantan.

General distribution. Indonesia, Brunei Darussalam.

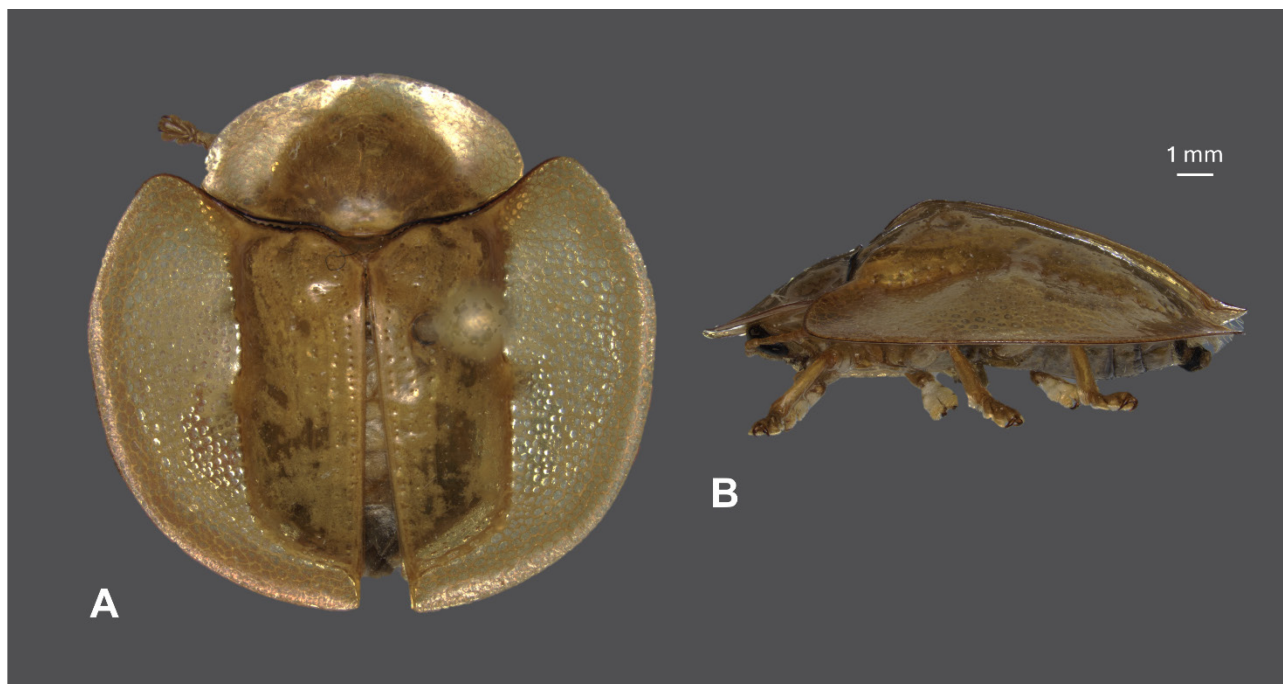


Figure 1. *Aspidomorpha sarawacensis* Spaeth, 1904. **A.** Dorsal view; **B.** Lateral view. Specimen from Kalimantan, deposited in MZB.

***Aspidomorpha sulawesica* Świętojańska, 2001**

Local distribution. Sulawesi (Świętojańska 2001b).

General distribution. Indonesia.

***Aspidomorpha sumbawaensis* Świętojańska & Borowiec, 2013**

Local distribution. Sumbawa (Świętojańska & Borowiec 2013).

General distribution. Indonesia.

***Aspidomorpha timorensis* Świętojańska, 2001**

Local distribution. Timor (Świętojańska 2001b).

General distribution. Indonesia.

***Aspidomorpha toxopei* Spaeth, 1926**

Local distribution. Buru (Spaeth 1926a).

General distribution. Indonesia.

Genus *Lacoptera* Boheman, 1854

Type species. *Lacoptera excavata* Boheman, 1855, designated by Maulik, 1919.

Patrisma Fairmaire, 1891:272 (Type species. *Lacoptera murrayi* Boheman, 1862 = *Patrisma pyramidalis* Fairmaire, 1891, by monotypy); *Sindia* Weise, 1897:105 (Type species. *Cassida sulcata* Olivier, 1808 = *Cassida clathrata* Fabricius, 1798 nec Linnaeus, 1758, by monotypy); *Asphalesia* Weise, 1899:246 (Type species. *Asphalesia confragosa* Weise, 1899, designated by Spaeth, 1914b); *Orphnoda* Weise, 1899:247 (Type species. *Lacoptera cancellata* Boheman, 1855, designated by Hincks 1952); *Orphnodella* Spaeth, 1902:20 (Type species. *Lacoptera cicatricosa* Boheman, 1855 = *Cassida abyssinica* Boheman, 1856, designated by Hincks 1952); *Sindiola* Spaeth, 1903:111 (Type species. *Sindiola parallelipennis* Spaeth, 1903, by monotypy); *Parorphnoda* Spaeth, 1932:228 (objective synonym of *Lacoptera*; originally described as *Parorphnoda*, typographical error); *Orphnodina* Spaeth, 1932:229 (Type species. *Orphnoda distans* Spaeth, 1902, designated by Hincks 1952); *Indocassis* Spaeth in Hincks, 1952:345 (Type species. *Cassida foveolata* Boheman, 1856, by monotypy; synonym of *Orphnodella*); *Lacopteroidea* Spaeth in Hincks, 1952:345 (Type species. *Cassida tredecimpunctata* Fabricius, 1801, by monotypy); *Eulacoptera* Hincks, 1952:337 (replacement name for *Lacoptera* sensu Spaeth, 1932; Type species. *Cassida corrugata* Sahlberg, 1823, by monotypy; synonym of *Orphnodella*).

Subgenus *Laccopteroidea* Spaeth, 1952***Laccoptera chinensis* Fabricius, 1798 ***

Material examined. 4 specs., Nusa Tenggara Barat, Rinjani National Park, Batu Koq, Senaru Area (Senaru, Rinjani National Park, Lombok Island), 24.xii.1999, Woro A. Noerdjito.

Local distribution. Bali (Borowiec 2001); Java (Borowiec 1990a, 1996). *Current study* – Lombok (**new record**).

General distribution. Indonesia, Malaysia, Myanmar, China, India, Japan, Laos, Nepal, Pakistan, Singapore, Thailand, Vietnam.

Remarks. There are no confirmed records of specimens from Sumatra, although it is likely that this species occurs in Sumatra.

***Laccoptera discreta* Boheman, 1855**

Material examined. 1 spec., Batoerraden G. Slamet, Java (Mount Slamet, Java Island), 20.xi.1927, F.C. Drescher.

Local distribution. Java (Boheman 1855; Borowiec 1990a). *Current study* – Java.

General distribution. Indonesia.

***Laccoptera fallax* Weise, 1910**

Local distribution. Larat (Weise 1910; Borowiec 1987; Świętojańska 2001b); Tanimbar (Weise 1910; Borowiec 1987; Świętojańska 2001b); Timor (Spaeth 1926c; Świętojańska 2001b).

General distribution. Indonesia.

***Laccoptera fasciata* Boheman, 1862**

Local distribution. Kalimantan (Boheman 1862).

General distribution. Indonesia, Malaysia.

***Laccoptera impressa* (Blanchard, 1853)**

Local distribution. Papua (Blanchard 1853; Borowiec 1992, 2009).

General distribution. Indonesia, Australia, Papua New Guinea.

***Laccoptera permodica* (Boheman, 1862)**

Local distribution. Timor (Borowiec 1987); Wetar (Weise 1910; Borowiec 1987).

General distribution. Indonesia.

***Laccoptera sculpturata* Boheman, 1855**

Material examined. 2 specs., INDONESIA, South Sulawesi, Pattunuang, Pangia, Kab. Maros 265 m (Pattunuang, Maros, Sulawesi Island), 25.v.2001, Woro A.N. & Puji A.

Local distribution. Sulawesi (Boheman 1855; Borowiec 1999a). *Current study* – Sulawesi.

General distribution. Indonesia.

***Laccoptera sedecimnotata* Boheman, 1862 ***

Material examined. 4 specs., INDONESIA, NTB, Sumbawa, Jl Semangkat 30 m (Semongkat, Sumbawa Island), 27.vi.1999, Woro A.N.; 19 specs., Wonogiri, Dlingo, Parang Gupito (Paranggupito, Java Island), 14.ii.1995; 2 specs., INDONESIA, Bali Island, KR Bedugul, Denpasar 1195 m (Bedugul, Bali Island), 2.vii.1999, Woro A.N.; 9 specs., INDONESIA, NTB, Lombok, Jl. Suranadi (Suranadi, Lombok Island), 23.vii.1999, Woro A.N.; 1 spec., Lerang W. Flores Rana Mese (Rana Mese, Flores Island), 115.xi.1949, Dr. Buhler & Dr. Sutter.

Local distribution. Alor (Borowiec 2009); Bali (Borowiec 1990a, 2001, 2009); Flores (Borowiec 1990a, 2001, 2009); Java (Boheman 1862; Borowiec 1999a); Lombok (Boheman 1862; Borowiec 2001); Sumatra (Spaeth 1926b); Sumba (Hincks 1953; Borowiec 1990a; Świętojańska 2001b); *Current study* – Sumbawa (**new record**), Java, Bali, Lombok, Flores.

General distribution. Indonesia.

***Laccoptera sutteri* Hincks, 1953**

Material examined. 2 specs., N.W. Soemba Laora 100 m (Loura, Sumba Island), iv.1925, Dammerman.

Local distribution. Sumba (Hincks 1953; Borowiec 1990a; Świętojańska 2001b); *Current study* – Sumba.

General distribution. Indonesia.

***Laccoptera tredecimpunctata* (Fabricius, 1801) ***

Material examined. 1 spec., P. Sebesi (Sebesi Island), 12.vi.1955, A.M.R. Wegner; 2 specs., W. Sumatra 450 m Loeboek Sikaping (Lubuk Sikaping, Sumatra Island), 1923, L. Hundeshagen; 32 specs., Indonesia, West Java, Bogor, Selabenda (Salabenda, Bogor, Java Island), 3.iii.1994, Woro A. Noerdjito; 11 specs., Bali Island, Bedugul, Tabanan Bali Pasar Damau, Candi Kuning 1190–1200 m (Bedugul, Bali Island), 30.vi.1999, Woro A.N.; 8 specs., E. Borneo 125 m Tabang Bengen River (Tabang, Kalimantan Island), 22.x.1956, A.M.R. Wegner.

Local distribution. Bali (Borowiec 1990a, 2009); Java (Boheman 1855; Borowiec 1985, 1990a, 2001, 2009); Kalimantan (Borowiec 1990a; Reid 1997); Lombok (Borowiec 1990a); Mentawai Archipelago (Borowiec 2009); Nias (Borowiec 1990a, 2001); Nusa Kambangan (Borowiec 1990a); Sumatra (Fabricius 1801; Borowiec 1990a, 2001, 2009); *Current study* – Sebesi (**new record**), Sumatra, Java, Bali, Kalimantan.

General distribution. Indonesia, Cambodia, China, India, Thailand, the Philippines, Malaysia.

Subgenus *Sindiola* Spaeth, 1903

***Laccoptera multinotata* Boheman, 1855**

Material examined. 2 specs., Batoerraden G. Slamet, Java (Mount Slamet, Java Island), i.1928, F.C. Drescher; 1 spec., Noesa Kambangan (Nusa Kambangan Island), 1.iii.1932, F.C. Drescher.

Local distribution. Java (Boheman 1855); Nusa Kambangan (Borowiec 1990a); *Current study* – Java, Nusa Kambangan.

General distribution. Indonesia, Laos.

***Laccoptera novemdecimnotata* Boheman, 1855**

Material examined. 1 spec., Preanger, Java Djampang Tengah (Jampang Tengah, Java Island), x.1934, Leg. Mrs. E. Walsh.

Local distribution. Java (Boheman 1855; Borowiec 1990a, 1999a); Nusa Kambangan (Borowiec 1990a); Sumatra (Borowiec 1990a); *Current study* – Java.

General distribution. Indonesia, Malaysia.

Tribe Basiprionotini Gressitt, 1952

Genus *Basiprionota* Chevrolat, 1836

Type species. *Cassida octopunctata* Fabricius, 1787, by monotypy.

Prioptera Hope, 1840:152 (Type species. *Cassida octopunctata* Fabricius, 1787, by original designation); *Stenoprioptera* Spaeth, 1914:132 (Type species. *Stenoprioptera tibetana* Spaeth, 1914, by monotypy).

***Basiprionota amboinica* (Spaeth, 1925)**

Material examined. 1 spec., S. Mollucas Ambon Laka (Ambon Island), 15.x.1949, M.A. Lieftinck.

Local distribution. Ambon, Seram (Spaeth 1925); *Current study* – Ambon.

General distribution. Indonesia.

***Basiprionota animosa* (Spaeth, 1926)**

Local distribution. Kalimantan (Spaeth 1926d).

General distribution. Indonesia.

***Basiprionota ceramensis* (Spaeth, 1925)**

Local distribution. Seram (Spaeth 1925).

General distribution. Indonesia.

***Basiprionota decemmaculata* (Boheman, 1850)**

Local distribution. Sumatra (Spaeth 1925, 1926b).

General distribution. Indonesia.

***Basiprionota decempustulata* (Boheman, 1850)**

Material examined. 2 specs., W. Sumatra Loeboek Sikaping 450 m (Lubuk Sikaping, Sumatra Island), 1923, L. Hundeshagen.

Local distribution. Java (Boheman 1850; Maulik 1919); Kalimantan (Maulik 1919); Sumatra (Borowiec 2001; 2009); *Current study* – Sumatra.

General distribution. Indonesia, Malaysia, Laos, Thailand.

***Basiprionota gibbifera* (Spaeth, 1925)**

Local distribution. Kalimantan (Spaeth 1925).

General distribution. Indonesia.

***Basiprionota impacata* (Spaeth, 1925)**

Material examined. 1 spec., Zuid Celebes Nanggala, 900 m Rantepao (Rantepao, Sulawesi Island), IX.1938, F.C. Drescher.

Local distribution. Sulawesi (Spaeth 1925; Borowiec 2009).

General distribution. Indonesia.

***Basiprionota maerkeli* (Boheman, 1850)**

Material examined. 1 spec., Batoerraden G. Slamet, Java (Mount Slamet, Java Island), i.1927, F.C. Drescher.

Local distribution. Java (Boheman 1850; Mohamedsaid 2000); *Current study* – Java.

General distribution. Indonesia.

***Basiprionota nigricollis* (Weise, 1897)**

Local distribution. Nias (Weise 1897).

General distribution. Indonesia.

***Basiprionota octomaculata* (Boheman, 1850)**

Local distribution. Java (Boheman 1850), Sumatra (Boheman 1850; Borowiec 2009).

General distribution. Indonesia.

***Basiprionota octonotata* (Boheman, 1850)**

Local distribution. Sulawesi (Boheman 1850).

General distribution. Indonesia.

***Basiprionota octopunctata* (Fabricius, 1787)**

Material examined. 1 spec., Bogor Bot. Garden Bogor, Indonesia (Bogor Botanical Garden, Java Island), 3.xi.1998, K. Nakamura & Woro A. Noerdjito.

Local distribution. Java, Kalimantan (Boheman 1850); *Current study* – Java.

General distribution. Indonesia, Malaysia, Thailand.

***Basiprionota privigna* (Boheman, 1862)**

Material examined. 2 specs., W. Sumatra 450 m Loeboek Sikaping (Lubuk Sikaping, Sumatra Island), 1923, L. Hundeshagen; 1 spec., Bogor Bot. Garden Bogor, Indonesia, 3.xi.1998, K. Nakamura & Woro A. Noerdjito.

Local distribution. Java (Boheman 1862); Sumatra (Borowiec 2009); *Current study* – Sumatra, Java.

General distribution. Indonesia, Singapore.

***Basiprionota puellaris* (Spaeth, 1925)**

Local distribution. Sumatra (Spaeth 1925).

General distribution. Indonesia (Sumatra).

***Basiprionota quadriimpressa* (Boheman, 1850) ***

Material examined. 1 spec., Noesa Kambangan, 20.ii.1927, F.C. Drescher (Nusa Kambangan Island); 2 specs., Java, Preanger N.O.I R.O. Tjikaso (Cikaso, Kuningan, Java Island), xii.1925, Coll. F.C. Drescher.

Local distribution. Java (Boheman 1850); *Current study* – Nusa Kambangan (**new record**), Java.

General distribution. Indonesia.

***Basiprionota ramigera* (Boheman, 1862)**

Local distribution. Sumatra, Kalimantan (Boheman 1862); Sulawesi (Weise 1912).

General distribution. Indonesia.

***Basiprionota rugosipennis* (Spaeth, 1901)**

Local distribution. Sumatra (Spaeth 1901).

General distribution. Indonesia.

Basiprionota sarawacensis* (Spaeth, 1912) *

Fig. 2

Material examined. 1 spec., E. Borneo 50 m Samarinda (Samarinda, Kalimantan Island), 15.xii.1956, A.M.R. Wegner.

Local distribution. *Current study* – Kalimantan (**new record**).

General distribution. Indonesia, Malaysia.

***Basiprionota scheerpeltzi* (Spaeth, 1925)**

Local distribution. Sumba (Spaeth 1925).

General distribution. Indonesia.

***Basiprionota sulana* (Spaeth, 1925)**

Local distribution. Sula (Spaeth 1925).

General distribution. Indonesia.



Figure 2. *Basiprionota sarawacensis* (Spaeth, 1912). **A.** Dorsal view; **B.** Lateral view. Specimen from Kalimantan, deposited in MZB.

***Basiprionota sumatrana* (Weise, 1912)**

Local distribution. Sumatra (Weise 1912); Nias (Spaeth 1926b).

General distribution. Indonesia.

Remarks. According to Spaeth (1926b), the specimen described by Weise (1912) originated from Nias Island (Lahagu, West Nias, West Sumatra, Indonesia).

***Basiprionota sumba* Borowiec, 2006**

Local distribution. Sumba (Borowiec 2006).

General distribution. Indonesia.

***Basiprionota timorensis* (Spaeth, 1925)**

Local distribution. Timor (Spaeth 1925).

General distribution. Indonesia.

***Basiprionota trux* (Spaeth, 1925)**

Local distribution. Ternate, Bacan, Morotai, Ambon, Gebe (Spaeth 1925).

General distribution. Indonesia.

***Basiprionota westermanni* (Mannerheim, 1845)**

Local distribution. Java (Mannerheim 1845).

General distribution. Indonesia, Myanmar, Cambodia, China, India, Laos, Thailand, Vietnam.

Genus *Megapyga* Boheman, 1850

Type species. *Megapyga eximia* Boheman, 1850, designated by Hincks 1952.

***Megapyga angulicollis* Spaeth, 1898**

Local distribution. Kalimantan (Spaeth 1898).

General distribution. Indonesia.

***Megapyga brevis* Spaeth, 1904**

Local distribution. Mentawai Archipelago, Sipora (Spaeth 1904); Sumatra (Borowiec 2009).

General distribution. Indonesia.

***Megapyga minima* Borowiec 1998**

Local distribution. Kalimantan (Borowiec 1998).

General distribution. Indonesia.

Tribe Cassidini Gyllenhal, 1813**Genus *Cassida* Linnaeus, 1758**

Type species. *Cassida nebulosa* Linnaeus, 1758, designated by Spaeth, 1914.

Deloyala Redtenbacher, 1858:952. Type species. *Cassida seraphina* Ménétries, 1836; junior homonym of *Deloyala* Duponchel & Chevrolat, 1843; *Cassidula* Weise, 1889:260. Type species. *Cassida nobilis* Linnaeus, 1758; junior homonym of *Cassidula* de Blainville, 1830; *Pseudocassida* Desbrochers, 1891:15. Type species. *Cassida murraea* Linnaeus, 1768, by monotypy; *Mionycha* Weise, 1891:204. Type species. *Cassida azurea* Fabricius, 1801, by monotypy; *Odontionycha* Weise, 1891:204. Type species. *Cassida viridis* Linnaeus, 1758, designated by Hincks 1952; *Crepidaspis* Spaeth, 1912:119. Type species. *Crepidaspis varicornis* Spaeth, 1912, by monotypy; *Taiwania* Spaeth, 1913:47 (Type species. *Taiwania sauteri* Spaeth, 1913, by monotypy; synonym of *Crepidaspis*); *Eremocassis* Spaeth, 1926:15 (Type species. *Eremocassis transcaspica* Spaeth, 1926, by monotypy; synonym of *Tylocentra*); *Lordicassis* Reitter, 1926:23 (Type species. *Cassida undecimnotata* Gebler, 1841, by monotypy); *Tylocentra* Reitter, 1926:24 (Type species. *Cassida turcmenica* Weise, 1892, designated by Hincks 1952); *Lordiconia* Reitter, 1926:23 (Type species. *Cassida canaliculata* Laicharting, 1781, by monotypy); *Onychocassis* Spaeth, 1926:23 (Type species. *Cassida brevis* Weise, 1884, designated by Hincks 1952); *Cassidulella* Strand, 1928:2 (replacement name for *Cassidula* Weise, 1889); *Alledoya* Hincks, 1950:508 (replacement name for *Deloyala* Redtenbacher, 1858); *Mionychella* Spaeth in Hincks 1952:346 (Type species. *Cassida hemisphaerica* Herbst, 1799, by monotypy); *Lasiocassis* Gressitt, 1952:485 (replacement name for *Deloyala* Redtenbacher, 1858); *Cyclocassida* Chen & Zia, 1961:442 (Type species. *Taiwania variabilis* Chen & Zia, 1961; synonym of *Crepidaspis*); *Yunocassis* Chen & Zia, 1961:442 (Type species. *Cassida appluda* Spaeth, 1926; synonym of *Crepidaspis*); *Cyrtocassis* Chen & Zia, 1961:446 (Type species. *Cyrtocassis tumidicollis* Chen & Zia, 1961); *Dolichocassida* Günther, 1958:568 (Type species. *Cassida pusilla* Waltl, 1839, by monotypy); *Pseudocassis* Steinhausen, 2002:24 (Type species. *Cassida flaveola* Thunberg, 1794, by original designation); *Betacassida* Steinhausen, 2002:26 (Type species. *Cassida nebulosa* Linnaeus, 1758; objective synonym of *Cassida*).

Cassida albertisi* (Spaeth, 1903) *

Fig. 3

Material examined. 1 spec., Idenburg Riv. Prauwenbivak (Mount Idenburg, Papua Island), xi.1920, W.C.v. Heurn.

Local distribution. *Current study* – Papua (new record).

General distribution. Indonesia, Papua New Guinea.

***Cassida astrolabiana* (Spaeth, 1903)**

Material examined. 1 spec., Irian Jaya Desay 180–200 m (Desay, Papua Island), 21.iii.1972, Dulhaer.

Local distribution. Papua (Borowiec 2001); *Current study* – Papua.

General distribution. Indonesia, Papua New Guinea.

Cassida catenata* (Boheman, 1855)

Material examined. 1 spec., Krakatau NW, i.1933, Dammerman; 2 specs., Noesa Kambangan (Nusa Kambangan Island), 28.xi.1937, F.C. Drescher; 1 spec., Lampung Tengah, Jabung, Asahan (Asahan, Lampung Timur, Sumatra Island), 22.viii.1974, M. Amir; 42 specs., Indonesia, West Java, Bogor, Cimanglid-Ciomas (Cimanglid, Bogor, Java Island), 20.xi.1994, Woro A. Noerdjito; 22 specs., Indonesia,

Bali Island, Bedugul, Denpasar 1195 m (Bedugul, Bali Island), 2.vii.1999, Coll. Woro A.N.; 4 specs., INDONESIA, Kalimantan Barat 4 km N Putussibau (Putussibau, Kalimantan Island), 11-12.vii.1996, Chris Reid.

Local distribution. Bali; Buton (Borowiec 2009); Java (Boheman 1855; Maulik 1919; Borowiec 2001, 2009); Kalimantan (Maulik 1919; Borowiec 2001); Nias (Weise 1892a, 1892b); Siberut (Borowiec 2009); Sulawesi (Maulik 1919; Borowiec 2001, 2009); Sumatra (Borowiec 2001, 2009); Sumba (Borowiec 2009); *Current study* – Krakatau (**new record**), Nusa Kambangan (**new record**), Sumatra, Java, Bali, Kalimantan.

General distribution. Indonesia, Malaysia, Bhutan, Myanmar, India.

Cassida circumdata Herbst, 1799 *

Material examined. 2 specs., Doerian Riouw-Arch (Durian Island, Riau Archipelago), vi.1923, Dammerman; 2 specs., Kangean Arch. Saobi (Saobi Island, Kangean Archipelago), 1.ix.1954, A. Hoogerwerf; 29 specs., INDONESIA, Bali, Bedugul, Botanical Garden (Bali Botanical Garden, Bali Island), 28.xi.1999, Coll. Woro A. Noerdjito; 9 specs., INDONESIA, NTB, Lombok Utara, Senaru Rinjani, 550–700 m (Senaru, Rinjani National Park, Lombok Island), 24.vi.1999, Coll. Woro A.N.; 6 specs., INDONESIA, NTB, Sumbawa, Batu dulang 740 m (Batu Dulang, Sumbawa Island), 27.vi.1999, Coll. Woro A.N.; 1 spec., Langgaliru C. Sumba (Langgaliru, Sumba Island), 9.x.1949, Dr. Buhler, Dr. Sutter.

Local distribution. Bali (Borowiec 1990a, 1996, 2001, 2009); Java (Boheman 1855, 1857; Borowiec 1985, 1990a, 1996; Rahayu 2022); Kalimantan (Reid 1997); Lombok (Borowiec 2001; Rahayu et al. 2023); Sulawesi (Blanchard 1853; Borowiec 1996, 2001); Sumatra (Borowiec 2001); Sumba (Borowiec 2001, 2009); Sumbawa (Borowiec 2001, 2009); *Current study* – Riau Archipelago (**new record**), Kangean Archipelago (**new record**), Bali, Lombok, Sumbawa, Sumba.

General distribution. Indonesia, Bangladesh, Sri Lanka, China, India, Japan, Laos, Malaysia, Nepal, Taiwan, Thailand, Vietnam, Philippines, United States (Hawaii).

Cassida corollata Spaeth, 1940*

Material examined. 2 specs., S. Tanggamoos (Tanggamus, Sumatra Island), 15.vi–15.vii.1924, Dr. L.J. Toxopeus; 1 spec., Preanger, Java, Djampang (Jampang, Java Island); 1 spec., N. Borneo (Kalimantan Utara), xii.1934, Leg. Mrs. E Walsh.

Local distribution. Kalimantan, Java (Spaeth 1940a); *Current study* – Sumatra (**new record**), Java, Kalimantan.

General distribution. Indonesia, Malaysia, Brunei Darussalam.

Cassida diomma Boisduval, 1835

Material examined. 1 spec., INDONESIA, Irian Jaya, Mimika Timur, Fakfak (Fakfak, Papua Island), 21.vi.1985, Anita H. Atmowidjojo.

Local distribution. Biak (Borowiec 2009); Papua (Borowiec 1990b, 2009); Tanimbar (Borowiec 2009); *Current study* – Papua.

General distribution. Indonesia, Papua New Guinea, Australia, Solomon Islands, Samoa.

Cassida dorsalis (Boheman, 1855)

Local distribution. Java (Boheman 1855).

General distribution. Indonesia.

Cassida javanica (Boheman, 1855)

Local distribution. Java (Boheman 1855).

General distribution. Indonesia.



Figure 3. *Cassida albertisi* (Spaeth, 1903). **A.** Dorsal view; **B.** Lateral view. Specimen from Papua, deposited in MZB.

***Cassida lombocensis* (Spaeth, 1919)**

Local distribution. Flores (Hincks 1953; Borowiec 2001); Lombok (Spaeth 1919); Sumba (Hincks 1953); Sumbawa (Borowiec 2001).

General distribution. Indonesia.

***Cassida nigrogibbosa* Spaeth, 1901**

Local distribution. Sumatra (Spaeth 1901).

General distribution. Indonesia.

***Cassida obtusata* Boheman, 1854**

Local distribution. Sumatra (Spaeth 1901).

General distribution. Indonesia, Myanmar, Cambodia, Sri Lanka, China, India, Japan, Laos, Nepal, Malaysia, Philippines, Thailand, Vietnam.

***Cassida pagana* (Boheman, 1855)**

Local distribution. Java (Boheman 1855, Weise 1897, Maulik 1919).

General distribution. Indonesia.

***Cassida papuana* (Spaeth, 1903) ***

Material examined. 2 specs., Moluccas NW. OBI Laiwui 0–200 m (Laiwui, Obi Island), 09.x.1953, A.M.R.Wegner; 1 spec., N. Moluccas S. BATJAN Wajaun 0 m (Bacan Selatan, Bacan Island), 06.vii.1953, A.M.R. Wegner; 1 spec., INDONESIA, Maluku, Seram Island, Kanike-Salumena, Mt. Binaiya (Mount Binaiya, Seram Island), xi.1987, Native Collector; 2 specs., W. Irian, Dosay, Ibom (Dosay, Papua Island), 21.iii.1973, Edy Sunario.

Local distribution. Ambon (Borowiec 1990a, 1990b); Bacan (Spaeth 1926a); Biak (Borowiec 1990b, 2009); Papua (Borowiec 1990b, 2001); Seram (Spaeth 1926a; Borowiec 2001, 2009); Waigeo; Yapen (Borowiec 2009); *Current study* – Obi (**new record**), Bacan, Seram, Papua.

General distribution. Indonesia, Papua New Guinea, Solomon Islands.

***Cassida physodes* (Boheman, 1855) ***

Material examined. 1 spec., INDONESIA, NTB, Sumbawa, Peropak Alor, 26.vi.1999, Coll. Woro A.N.

Local distribution. Bali (Borowiec 2001); Java (Borowiec 2001, 2009); Seram (Borowiec 2001); Sumatra (Boheman 1855; Borowiec 2001, 2009); *Current study* – Sumbawa.

General distribution. Indonesia, Laos, Thailand, Vietnam, Malaysia.

***Cassida rati* Maulik, 1923**

Local distribution. Sumatra (Borowiec 2001).

General distribution. Indonesia, Myanmar, China, Laos, Taiwan, Vietnam.

***Cassida recondita* (Boheman, 1862)**

Local distribution. Kalimantan (Boheman 1862); Seram (Borowiec 2001, 2009); Sulawesi (Spaeth 1919); Sumatra (Boheman 1862).

General distribution. Indonesia, Malaysia, Philippines.

***Cassida ribbei* (Spaeth, 1919)**

Material examined. 2 specs., INDONESIA, South Sulawesi, Pattunuang, Kab. Maros 250 m (Pattunuang, Maros, Sulawesi Island), 19.v.2001, Coll. Woro A.N. & Puji A.

Local distribution. Sulawesi (Spaeth 1919; Borowiec 2001); *Current study* – Sulawesi.

General distribution. Indonesia.

***Cassida ruralis* (Boheman, 1862)**

Material examined. 17 specs., INDONESIA, West Java, Cibodas, Gede Pangerango (Cibodas, Cianjur, Java Island), 17.vi.1994, Woro A. Noerdjito; 22 specs., INDONESIA, Bali, Bali Botanical Garden (Bali Botanical Garden, Bali Island), 29.xii.1999.

Local distribution. Bali (Borowiec 2001, 2009); Java (Boheman 1862; Maulik 1919; Borowiec 1990a, Borowiec 2001, Borowiec 2009); *Current study* – Java, Bali.

General distribution. Indonesia, Myanmar, China, India, Nepal, Taiwan, Malaysia.

***Cassida samangana* (Spaeth, 1919)**

Local distribution. Sulawesi (Spaeth 1919).

General distribution. Indonesia.

***Cassida sexguttata* Boisduval, 1835**

Material examined. 1 spec., W. Irian, Sentani (Sentani, Papua Island), 27.iii.1993, Dulhaer.

Local distribution. Aru Archipelago (Spaeth 1915b); Papua (Borowiec 1990b, 2001, 2009); Yapen (Borowiec 2001, 2009); *Current study* – Papua.

General distribution. Indonesia, Papua New Guinea, Australia.

***Cassida timorensis* Borowiec 1995 ***

Material examined. 12 specs., INDONESIA, BALI, TN Bali Barat, Sumber Klampok, 30.xii.1999, Woro, AN.; 3 specs., INDONESIA, Nusa Tenggara Timur, Kupang, Kec. Patuleu, Desa Camplong Nunpisa (Nunpisa, Kupang, Timor Island), 21.ii.1998, E. Cholik & Alwin M.; 1 spec., Island Flores, Rana Mese 1300–1500 m (Rana Mese, Flores Island), I.iv.1958, A.M.R. Wegner.

Local distribution. Flores (Borowiec 2001); *Current study* – Bali (**new record**), Timor (**new record**), Flores.

General distribution. Indonesia, Timor Leste.

***Cassida triangulum* (Weise, 1897)**

Material examined. 2 specs., W. Sumatra 450 m Loeboek Sikaping (Lubuk Sikaping, Sumatra Island), 1923, L. Hundeshagen; 1 spec., W. Java 100 m Djasinga (Jasinga, Java Island), 12.viii.1952, Leg. Manis; 1 spec., E. Borneo 95 m Gunungsari (Gunungsari, Kalimantan Island), 14.viii.1956, A.M.R. Wegner.

Local distribution. Java (Borowiec 1990a; 2009); Kalimantan (Borowiec 2001); Sumatra (Borowiec 2009); *Current study* – Sumatra, Java, Kalimantan.

General distribution. Indonesia, Myanmar, China, Thailand, Vietnam, Malaysia.

Cassida varicornis* (Spaeth, 1912) *

Fig. 4

Material examined. 3 specs., E. Borneo 125 m Tabang, Bengen River (Tabang, Kalimantan Island), 30.IX.1956, A.M.R. Wegner.

Local distribution. *Current study* – Kalimantan (**new record**).

General distribution. Indonesia, Malaysia.

***Cassida viridiotata* (Boheman, 1855)**

Local distribution. Java (Boheman 1855).

General distribution. Indonesia.

Genus *Chiridopsis* Spaeth, 1922

Type species. *Coptocyclus nigrosepta* Fairmaire, 1891, by present designation).

Chiridopsis Spaeth, 1924:337 (Type species. *Coptocyclus aubei* Boheman, 1855, by original designation; junior homonym and synonym); *Chirida* Chapuis, 1875:405.

***Chiridopsis punctata* (Weber, 1801)**

Material examined. 1 spec., N.O. Sumatra, Environs Medan (Medan, Sumatra Island), 1.iii.1950, H.W. Naezer; 3 specs., INDONESIA, West Java, Sukabumi, Situ Gunung 1000 m (Situ Gunung, Java Island), 11.vii.1999, Coll. Woro A.N.; 1 spec., S.E. Borneo, Ampah, 0–20 m (Ampah Kota, Kalimantan Island), 04.v.1948, L.S. Liang.

Local distribution. Java (Boheman 1855; Borowiec 1985, 2001, 2009); Kalimantan (Reid 1997); Sumatra (Weber 1801; Fabricius 1801; Olivier 1808; Boheman 1855; Borowiec 1990a, 1996, 2001, 2009); *Current study* – Sumatra, Java, Kalimantan.

General distribution. Indonesia, Myanmar, China, India, Laos, Thailand, Vietnam, Malaysia.

***Chiridopsis scalaris* (Weber, 1801)**

Material examined. 3 specs., W. Sumatra 450 m Loeboek Sikaping (Lubuk Sikaping, Sumatra Island), 1923, L. Hundeshagen; 4 specs., Purwodadi Bot. Garden, Pagar Nurseri (Purwodadi Botanical Garden, Java Island), 18.i.1995, Woro A. Noerdjito; 1 spec., INDONESIA, Kalimantan Barat 3 km N. Putussibau (Putussibau, Kalimantan Island), 19–20.vi.1996, Chris Reid.

Local distribution. Java (Boheman 1855; Maulik 1919; Borowiec 1990a, 2009); Kalimantan (Borowiec 1990a; Reid 1997); Sumatra (Weber 1801; Fabricius 1801; Olivier 1808; Boheman 1855; Maulik 1919; Borowiec 2001, 2009); *Current study* – Sumatra, Java, Kalimantan.

General distribution. Indonesia, Myanmar, China, India, Malaysia, Thailand, Vietnam, Philippines.

Genus *Lorentzocassis* Spaeth, 1913

Type species. *Lorentzocassis papuana* Spaeth, 1913, by monotypy).

Lorentsia Spaeth, 1912:120 (Type species. *Lorentsia purpurascens* Spaeth); *Lorentzia* Spaeth, 1913:449 (emendation).

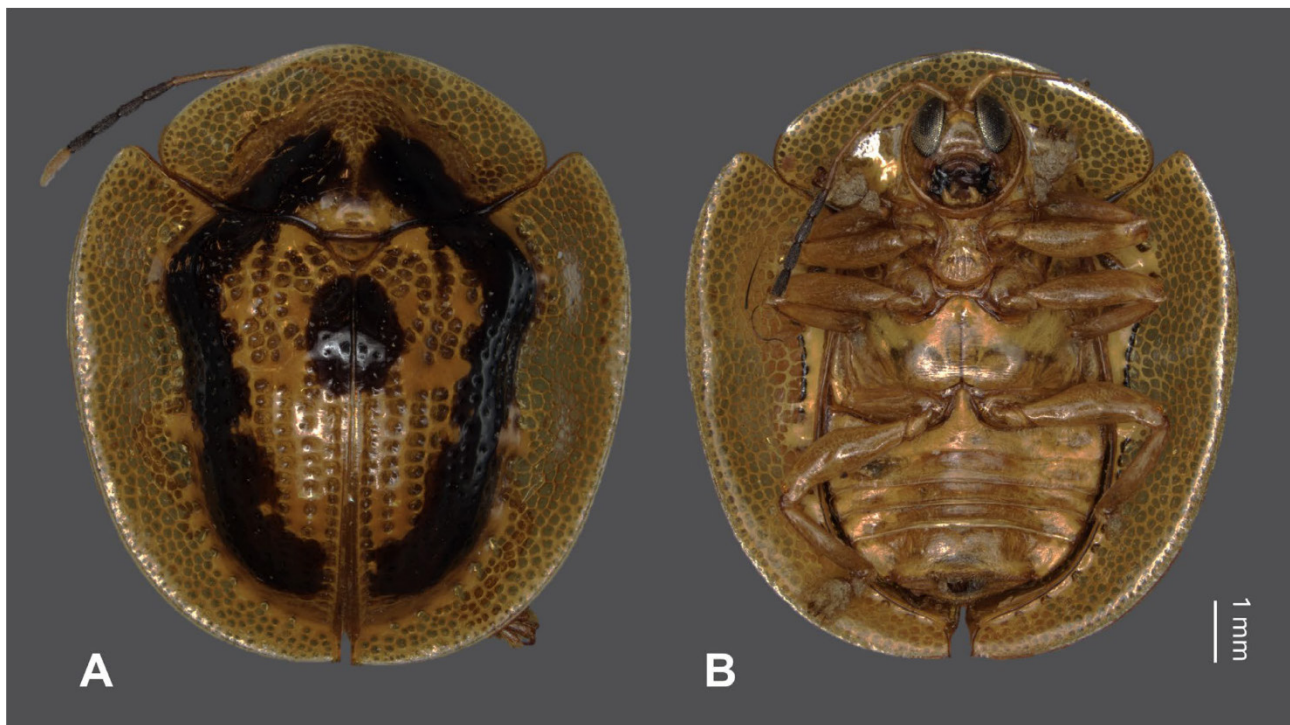


Figure 4. *Cassida varicornis* (Spaeth, 1912). **A.** Dorsal view; **B.** Ventral, view. Specimen from Kalimantan, deposited in MZB.

Lorentzocassis aruensis Spaeth, 1926

Local distribution. Aru Archipelago (Spaeth 1926d; Borowiec 1991).

General distribution. Indonesia.

Lorentzocassis papuana Spaeth, 1913

Local distribution. Papua (Spaeth 1913a; Borowiec 1991).

General distribution. Indonesia.

Genus *Malayocassis* Spaeth, 1952

Type species. *Coptocyclus hilaris* Boheman, 1855, by monotypy.

Malayocassis hilaris (Boheman, 1855)

Material examined. 2 specs., S. Sumatra 600 m, S.W. Lampongs, Mt. Tanggamoos (Mount Tanggamus, Sumatra Island), xii.1934, Lieftinck & Toxopeus; 1 spec., INDONESIA, Kalimantan Barat, Gunung Nahaloh (Mount Nahaloh, Nanga Bungan, Kalimantan Island), 27.xi.1996, Chris Reid.

Local distribution. Java, Sumatra (Boheman 1855); Kalimantan (Boheman 1862); Sumatra (Borowiec 2001); Siberut (Borowiec 2009); *Current study* – Sumatra, Kalimantan.

General distribution. Indonesia, Malaysia.

Genus *Meroscalsis* Spaeth, 1903

Type species. *Coptocyclus radiata* Boheman, 1855, by original designation.

Melichrocassis Spaeth, 1913:451 (Type species. *Melichrocassis blackburni* Spaeth, 1913, designated by Hincks 1952; synonym).

Meroscalsis dohertyi Spaeth, 1913

Local distribution. Papua (Spaeth 1913a).

General distribution. Indonesia.

Remarks. The locality of the Holotype is Doré am Geelvink-Busen (Nordküste von Holländisch-Neu-Guinea). Geelvink-Busen is another name for Cenderawasih Bay in Papua.

***Meroscalsis radiata* (Boheman, 1855)**

Local distribution. Aru Archipelago (Weise 1901).

General distribution. Indonesia, Papua New Guinea.

Genus *Rhacocassis* Spaeth, 1904

Type species. *Coptocyclus flavoplagiata* Baly, 1863, by monotypy.

Thlaspidomorpha Spaeth, 1914:563 (Type species. *Coptocyclus balyi* Boheman, 1855, by monotypy; synonym).

***Rhacocassis flavoplagiata* (Baly, 1863)**

Material examined. 1 spec., W. Sumatra 450 m, Loeboek Sikaping (Lubuk Sikaping, Sumatra Island), 1923, L. Hundeshagen.

Local distribution. Laut (Borowiec 1990a); Sumatra (Spaeth 1904; Borowiec 2001, 2009); *Current study* – Sumatra.

General distribution. Indonesia, Malaysia, Thailand.

Genus *Thlaspida* Weise, 1899

Type species. *Coptocyclus cribrosa* Boheman, 1855, designated by Spaeth, 1914.

***Thlaspida biramosa* (Boheman, 1855)**

Local distribution. Sumatra (Weise 1899, Spaeth 1914b).

General distribution. Indonesia, Myanmar, China, India, South Korea, Japan, Taiwan, Laos, Thailand, Malaysia, Vietnam.

***Thlaspida triangularis* Spaeth, 1926**

Local distribution. Kalimantan (Spaeth 1926e).

General distribution. Indonesia.

Remarks. Holotype locality is from Pengarom (Pengaron), Banjar, South Kalimantan, Indonesia.

Genus *Thlaspidosoma* Spaeth, 1901

Type species. *Thlaspidosoma dohrni* Spaeth, 1901, designated by Spaeth, 1914.

***Thlaspidosoma celebensis* Spaeth, 1933**

Local distribution. Sulawesi (Spaeth 1933a).

General distribution. Indonesia.

***Thlaspidosoma dohrni* Spaeth, 1901**

Local distribution. Sumatra (Spaeth 1901).

General distribution. Indonesia, Malaysia.

***Thlaspidosoma fallaciosa* Spaeth, 1901 ***

Material examined. 1 spec., Indonesia, Kalimantan Timur (East Kalimantan, Kalimantan Island), 17.iii.1978, Y. R. Suhardjono.

Local distribution. Sulawesi (Borowiec 2001); Sumatra (Spaeth 1901; Borowiec 2009); *Current study* – Kalimantan (**new record**).

General distribution. Indonesia.

***Thlaspidosoma horsfieldi* (Boheman, 1855)**

Material examined. 1 spec., Batoerraden, G. Slamet, Java (Mount Slamet, Java Island), 21.x.1928, F.C. Drescher.

Local distribution. Java (Boheman 1855); *Current study* – Java.

General distribution. Indonesia.

Genus *Thlaspidula* Spaeth, 1901

Type species. *Thlaspidula fimbriata* Spaeth, 1901, by monotypy.

Elpinora Spaeth, 1903:119 (Type species. *Elpinora muelleri* Spaeth, 1903, by monotypy; synonym).

***Thlaspidula gandangdewata* Budi & Świętojańska, 2025**

Local distribution. Sulawesi (Budi & Świętojańska 2025).

General distribution. Indonesia.

***Thlaspidula moseri* (Spaeth, 1915)**

Local distribution. Kaledupa (Spaeth 1915a).

General distribution. Indonesia.

***Thlaspidula muelleri* (Spaeth, 1903)**

Local distribution. Papua (Borowiec 2009).

General distribution. Indonesia, Papua New Guinea.

***Thlaspidula riedeli* Borowiec & Świętojańska, 2001**

Local distribution. Papua (Borowiec & Świętojańska 2001).

General distribution. Indonesia.

***Thlaspidula sarinoid* Budi & Świętojańska, 2025**

Local distribution. Sulawesi (Budi & Świętojańska 2025).

General distribution. Indonesia.

Tribe Notosacanthini Gressitt, 1952**Genus *Notosacantha* Chevrolat, 1836**

Type species. *Cassida echinata* Fabricius, 1801, by monotypy.

Hoplionota Hope, 1840:152 (Type species. *Cassida echinata* Fabricius, 1801, by original designation; *Thyreomorpha* Boheman, 1850:35 (Type species. *Hoplionota badia* Boheman, 1850, by monotypy).

Notosacantha appropinquans* (Spaeth, 1913) *

Fig. 5

Material examined. 1 spec., Lempake, Tanah Merah (Lempake, Samarinda, Kalimantan Island), 27.iii.1981, Coll. Yayuk R.

Local distribution. *Current study* – Kalimantan (**new record**).

General distribution. Indonesia, Malaysia.

***Notosacantha bioculata* (Wagener, 1877) ***

Material examined. 2 specs., Karimon Djawa (Karimunjawa Island), v.1926, Dammerman.

Local distribution. Mentawai Archipelago; Nias (Spaeth 1900); Sumatra (Wagener 1877; Spaeth 1900; Borowiec 2001; Borowiec 2009).

General distribution. Indonesia.

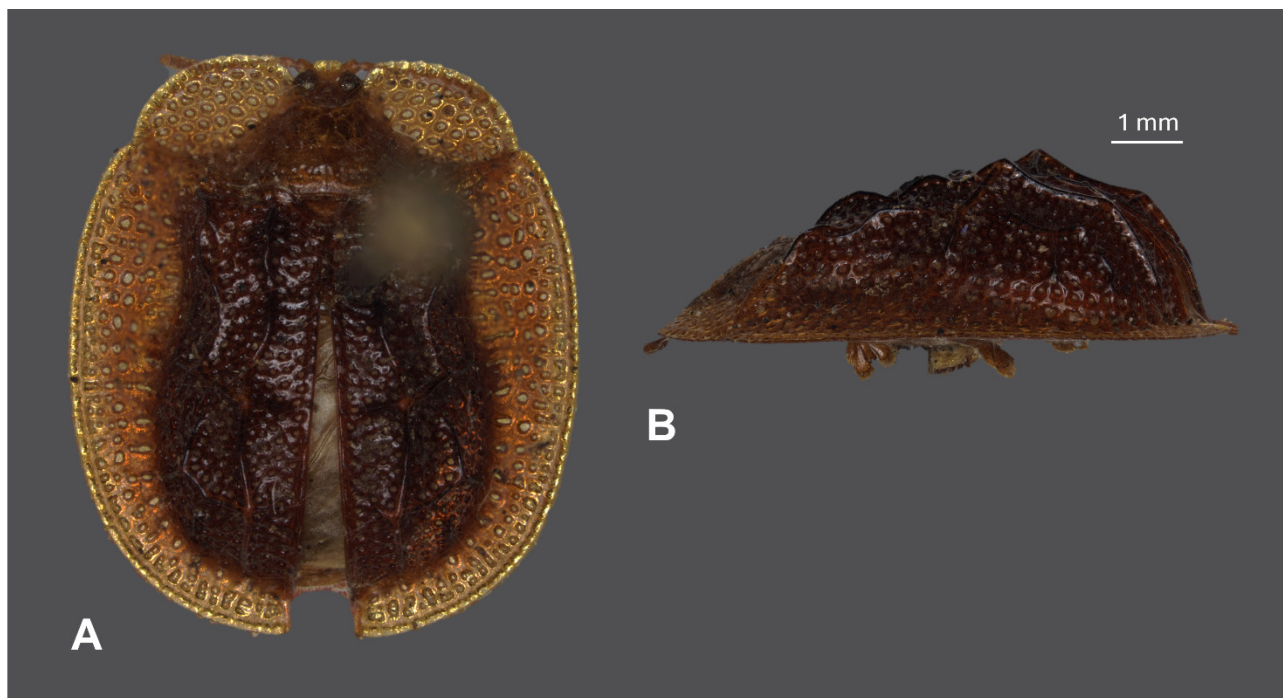


Figure 5. *Notosacantha appropinquans* (Spaeth, 1913). **A.** Dorsal view; **B.** Lateral view. Specimen from Kalimantan, deposited in MZB.

Notosacantha calligera* (Spaeth, 1921) *

Fig. 6

Material examined. 1 spec., Tanah Merah, Lempake, Kalimantan (Lempake, Samarinda, Kalimantan Island), 19.III.78.

Local distribution. *Current study* – Kalimantan (**new record**).

General distribution. Indonesia, Malaysia.

***Notosacantha circumdata* (Wagener, 1881) ***

Material examined. 1 spec., G. Slamet, Java (Mt. Slamet, Java Island), 12.vii.1925, Drescher.

Local distribution. Sumatra (Spaeth 1904; Borowiec 2001); *Current study* – Java (**new record**).

General distribution. Indonesia, Malaysia, Thailand, Myanmar.

***Notosacantha clavareaui* (Spaeth, 1900) ***

Material examined. 1 spec., Noesa Kambangan, 20.ii.1921, F.C. Drescher.

Local distribution. Sumatra (Spaeth 1900); *Current study* – Nusa Kambangan (**new record**).

General distribution. Indonesia, Malaysia.

***Notosacantha corporaali* (Spaeth, 1933)**

Local distribution. Sumatra (Spaeth 1933b).

General distribution. Indonesia.

***Notosacantha dammaropsi* Sekerka, 2009**

Local distribution. Papua (Sekerka 2009).

General distribution. Indonesia, Papua New Guinea.



Figure 6. *Notosacantha calligera* (Spaeth, 1921). **A.** Dorsal view; **B.** Lateral view. Specimen from Kalimantan, deposited in MZB.

***Notosacantha dohrni* Świętojańska 2001**

Local distribution. Sumatra (Świętojańska 2001a)

General distribution. Indonesia.

***Notosacantha flavicornis* (Spaeth, 1913)**

Local distribution. Sumba (Spaeth 1913b).

General distribution. Indonesia.

***Notosacantha flaviventris* Borowiec & Takizawa, 2013 ***

Material examined. 1 spec., INDONESIA, Kalimantan Barat, Sungai Sibau, Camp Sg. Belabi (Sibau Hulu, Kalimantan Island), 4–10.vi.1996, Chris Reid.

Local distribution. Sumatra (Borowiec et al. 2013); *Current study* – Kalimantan (**new record**).

General distribution. Indonesia, Malaysia.

Notosacantha flavosuturata* Świętojańska & Takizawa, 2013 *

Fig. 7

Material examined. 1 spec., Java, Patimoean (Patimuan, Java Island), vi.1935, Drescher.

Local distribution. *Current study* – Java (**new record**).

General distribution. Indonesia, Malaysia.

Notosacantha gestroi* (Spaeth, 1903) *

Fig. 8

Material examined. 1 spec., INDONESIA, Irian Jaya, Freeport Concession Timika, 25.iii.1998, R. Ubaidillah, Peggie.

Local distribution. *Current study* – Papua (**new record**).

General distribution. Indonesia, Papua New Guinea.

***Notosacantha halmaherana* Świętojańska, 2006**

Local distribution. Halmahera (Świętojańska 2006).

General distribution. Indonesia.

***Notosacantha jacobsoni* (Spaeth, 1926) ***

Material examined. 4 specs., Noesa Kambangan, Java (Nusa Kambangan Island), v.1925, Drescher; 2 specs., Karimon Djawa, v.1926, Dammerman (Karimunjawa Island); 1 spec., Kangean Arch. Bajulan (Kangean Island), 19.xii.1954, A. Hoogerwerf; 2 specs., Sibolangit (Sibolangit, Sumatra Island), 8.x.1925, Karny; 2 specs., Batoerraden, G. Slamet, Java (Mount Slamet, Java Island), vi.1932, F.C. Drescher.

Local distribution. Java (Spaeth 1926c); Sumatra (Borowiec 2009); *Current study* – Nusa Kambangan (**new record**), Karimunjawa Archipelago (**new record**), Kangean Archipelago (**new record**), Sumatra, Java.

General distribution. Indonesia.

***Notosacantha malaysiana* Świętojańska, 2004**

Local distribution. Siberut (Borowiec 2009).

General distribution. Indonesia, Malaysia.

***Notosacantha matsuzawai* Świętojańska, 2001 ***

Material examined. 1 spec., INDONESIA, Kalimantan Barat, Gunung Nahaloh (Mount Nahaloh, Nanga Bungan, Kalimantan Island), 20–22.xii.1996, C. Reid.

Local distribution. Sumatra (Świętojańska 2001a); *Current study* – Kalimantan (**new record**).

General distribution. Indonesia.

***Notosacantha mentawaiensis* Świętojańska & Stach, 2011**

Local distribution. Siberut (Świętojańska & Stach 2011).

General distribution. Indonesia.

***Notosacantha molucana* (Boheman, 1850)**

Local distribution. Ambon (Boheman 1850).

General distribution. Indonesia, Australia, Papua New Guinea, Solomon Islands.

***Notosacantha obscura* (Wagner, 1881)**

Local distribution. Sulawesi (Wagner 1881).

General distribution. Indonesia.

***Notosacantha odiosa* (Boheman, 1857)**

Material examined. 1 spec., G. Tangkoeban Prahoe 4000–5000 voet, Preanger, Java (Mount Tangkuban Perahu, Java Island), ii.1937, F.C. Drescher.

Local distribution. Java (Boheman 1857); Sumatra (Borowiec 2001); *Current study* – Java.

General distribution. Indonesia.

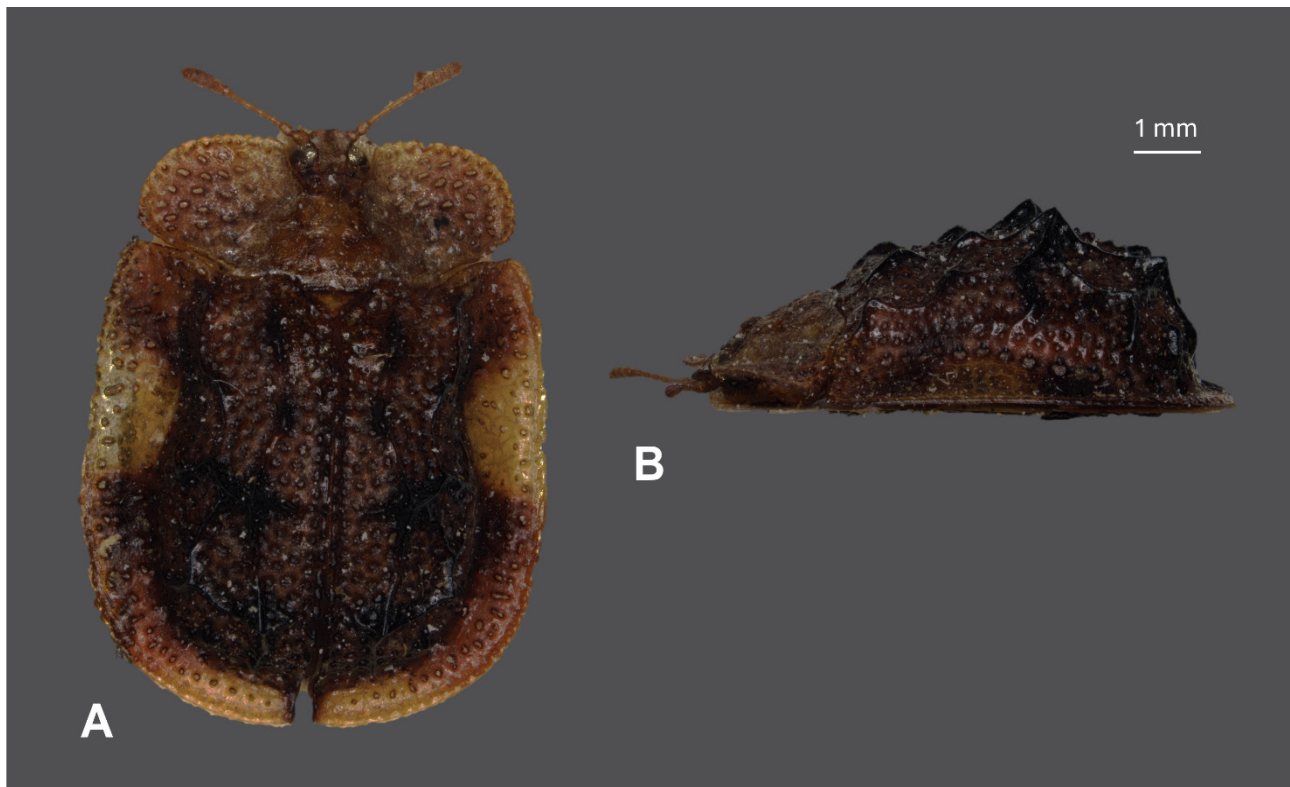


Figure 7. *Notosacantha flavosuturata* Świątojańska & Takizawa, 2013. **A.** Dorsal view; **B.** Lateral view. Specimen from Java, deposited in MZB.

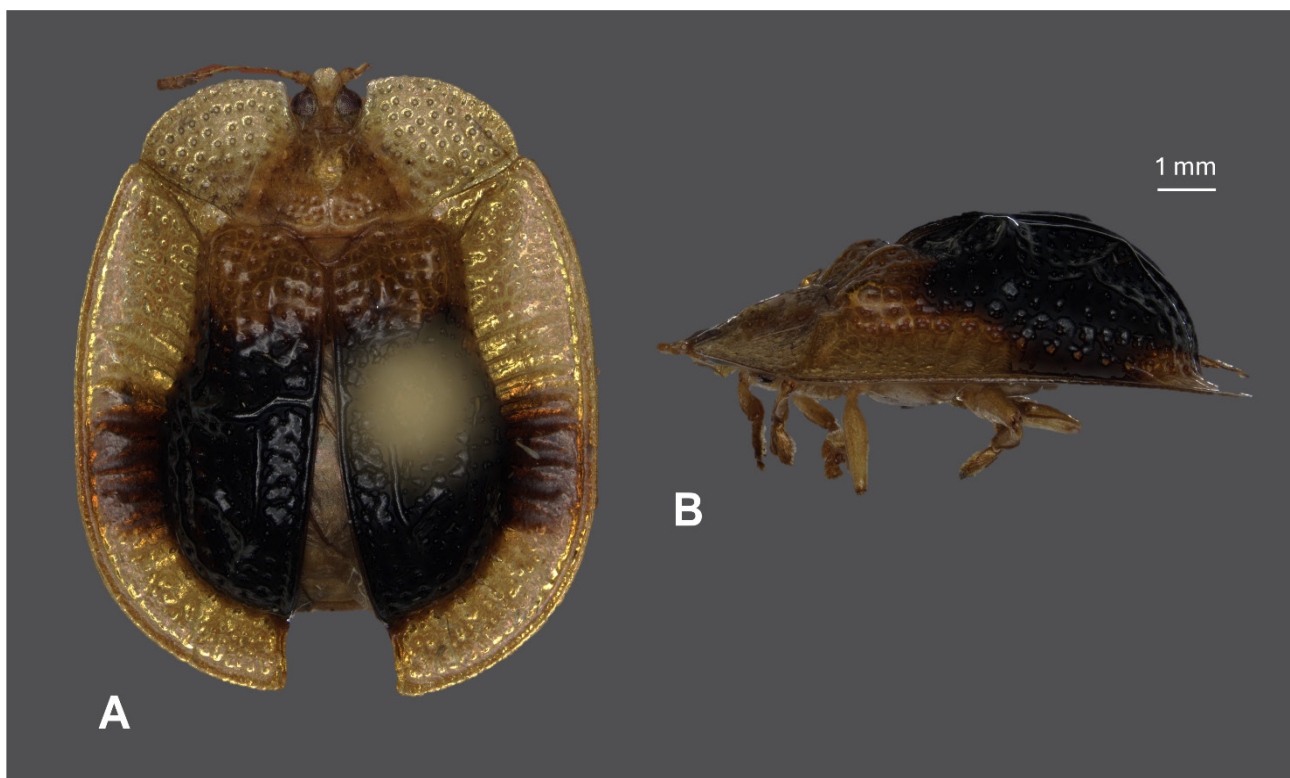


Figure 8. *Notosacantha gestroi* (Spaeth, 1903). **A.** Dorsal view; **B.** Lateral view. Specimen from Papua, deposited in MZB.

***Notosacantha reinecki* (Spaeth, 1913)**

Local distribution. Sulawesi (Spaeth 1913b; Borowiec 2001).

General distribution. Indonesia.

***Notosacantha riedeli* Świętojańska, 2002**

Local distribution. Sulawesi (Świętojańska 2002).

General distribution. Indonesia.

***Notosacantha rufa* (Wagner, 1881) ***

Material examined. 2 specs., Doerian Riouw-Arch (Durian Island, Riau Archipelago), vi.1923, Dammerman; 2 specs., Koebangkangkoeng, Zuid-Banjoemas, Java 25 Mr. (Kubangkangkung, Cilacap, Java Island), 1.v.1927, F.C. Drescher.

Local distribution. Java (Spaeth 1913b, 1933b); Kalimantan (Spaeth 1933b); Siberut (Borowiec 2009); Sumatra (Spaeth 1904, 1913b, 1933b); *Current study* – Riau Archipelago (**new record**), Java.

General distribution. Indonesia, Malaysia, Vietnam, Thailand.

***Notosacantha sarawaiensis* Świętojańska 2001**

Local distribution. Kalimantan (Świętojańska 2001c).

General distribution. Indonesia.

***Notosacantha serricosta* (Boheman, 1850)**

Local distribution. Java (Boheman 1850).

General distribution. Indonesia.

***Notosacantha sulawesica* Borowiec 1999**

Local distribution. Sulawesi (Borowiec 1999b).

General distribution. Indonesia.

***Notosacantha sumatrana* (Spaeth, 1940)**

Local distribution. Sumatra (Spaeth 1940b).

General distribution. Indonesia.

***Notosacantha sumbawaensis* Świętojańska & Borowiec, 1999**

Local distribution. Sumbawa (Świętojańska & Borowiec 1999).

General distribution. Indonesia.

***Notosacantha weyersi* (Spaeth, 1900)**

Local distribution. Java (Spaeth 1913b; Borowiec 2001); Sumatra (Spaeth 1900).

General distribution. Indonesia, Malaysia, Brunei Darussalam.

DISCUSSION

This catalogue presents a compilation of available data on Cassidinae recorded from Indonesia based on published literature and examined museum material. Documentation of 146 species from 14 genera, including eight new records for the country and 30 additional records for the island, indicates that the distribution data for this group continues to expand. These numbers are based on re-examination of collections and verification of historical records.

Observations of material from the Museum Zoologicum Bogoriense highlight the importance of museum collections in updating fauna records. Several new records reported originate from previously unidentified or overlooked specimens, emphasising the ongoing relevance of curated collections for documenting biodiversity. Most of the newly reported locations correspond to remote or unexplored islands, such as Bawean, Morotai, Obi, and Sebesi. These findings highlight the importance of museum collections in revealing species records that might otherwise remain hidden due to logistical challenges in field exploration (New 1998). The composition of the Cassidinae fauna in Indonesia reflects a transitional biogeographic pattern between the Oriental and Australasian regions. Several genera, such as *Aspidomorpha* and *Cassida*, are widely distributed across both regions, indicating strong faunal connectivity and supporting the hypothesis of biotic interchange across Wallacea (Myers et al. 2000). In contrast, some taxa appear to be more restricted to either western (Sundaic) or eastern (Australasian) parts of the archipelago, suggesting historical barriers and dispersal limitations.

The presence of several taxa, such as *Aspidomorpha miliaris* and *Cassida circumdata*, on various islands with different altitude ranges reflects their wide distribution across various regions of Indonesia. There are also several species that previously had limited records, but have now been found in other locations. For example, confirmed records of *Cassida timorensis* from Flores and Timor extend its recorded distribution beyond previous reports. However, for some species, including *Basiprionota sulana* and *Cassida samangana*, they are only known from their type localities based on available literature and examined material (Spaeth 1919). From a taxonomic perspective, the compilation of verified records highlights the importance of continued revision work within Cassidinae. The updated data and information in this catalogue provide an accurate framework that can support future systematic and distributional studies of this group. The current dataset also reveals an imbalance in sampling effort across the Indonesian archipelago. Well-studied regions such as Java and parts of Sumatra show relatively comprehensive records, whereas many eastern islands remain poorly explored. The occurrence of new records from islands such as Bawean, Morotai, Obi, and Sebesi suggests that additional undocumented diversity is likely present in underexplored areas. Although host plant data are available for only a subset of species (New 1998; Myers et al. 2000; Chaboo 2007), their distribution is likely closely linked to the availability of host plants. Variations in plant communities across islands and habitats may influence the presence and distribution of Cassidinae species, particularly for more specialized taxa. The presence of widely distributed species across multiple islands also indicates high dispersal ability and potential for range expansion (Whittaker et al. 2008), whereas species restricted to specific localities may represent endemic elements. However, distinguishing between native, endemic, and potentially introduced species requires further ecological and phylogenetic investigation.

The findings of this study underscore the remarkable species richness of the Indonesian fauna and highlight significant gaps in current documentation. The discovery of numerous previously unrecorded occurrences emphasizes the urgent need for continued taxonomic research and comprehensive faunistic surveys. Future efforts should prioritize systematic revisions of poorly known genera, targeted surveys in underrepresented regions, and integrative approaches combining morphological and molecular data to resolve existing taxonomic uncertainties. This catalogue provides an important baseline for future research in the systematics and biodiversity of Cassidinae beetles in Indonesia and beyond.

AUTHOR'S CONTRIBUTION

The authors confirm their contribution to the paper as follows: A.S. Budi: conceived the study, examined the material, compiled the data, and prepared the first draft of the manuscript. J. Świętojańska: contributed to taxonomic verification, data interpretation, and manuscript revision. Both authors read and approved the final version of the manuscript. The authors read and approved the final version of the manuscript.

FUNDING

This research received no specific grant from any funding agencies.

AVAILABILITY OF DATA AND MATERIAL

The specimens listed in this study are deposited in the Museum Zoologicum Bogoriense (MZB), Research Center for Biosystematics and Evolution, National Research and Innovation Agency (BRIN), Indonesia, and are available from the curator upon reasonable request.

ETHICS APPROVAL AND CONSENT TO PARTICIPATE

This study only included arthropod material, and all required ethical guidelines for the treatment and use of animals were strictly adhered to in accordance with international, national, and institutional regulations. No human participants were involved in any studies conducted by the authors for this article.

CONSENT FOR PUBLICATION

Not applicable.

CONFLICT OF INTERESTS

The authors declare that there is no conflict of interest regarding the publication of this paper.

GENERATIVE AI STATEMENT

The authors declare that no generative AI tools were used in the preparation of this manuscript.

ACKNOWLEDGMENTS

The authors sincerely thank the Directorate of Scientific Collection Management (DPKI), National Research and Innovation Agency (BRIN), for providing access to the collections of the Museum Zoologicum Bogoriense (MZB). We are grateful to Woro Anggraitoningsih Noerdjito for her substantial contribution to the specimen collections examined in this study. We also thank Sarino for his valuable technical assistance during specimen examination. We are grateful to Lech Borowiec for valuable discussions on Cassidinae taxonomy. We also thank Salmah Yaakop for providing important foundational insights relevant to this study.

REFERENCES

- Blanchard, C.E. (1853) Description des insectes. In: Hombron, J.B. & Jacquinot, H. (eds) *Voyage au Pole Sud et dans l'Océanie sur les corvettes l'Astrolabe et la Zélée; exécuté par ordre du Roi pendant les années 1837–1838–1839–1840, sous le commandement de M.J. Dumont-d'Urville, Capitaine de vaisseau; publié par ordre du gouvernement, sous la direction supérieure de M. Jacquinot, Capitaine de vaisseau, commandant de la Zélée*. Zoologie, Tome quatrième. Gide et J. Baudry, Paris. [5] + 422 pp.
- Boheman, C.H. (1850) *Monographia Cassidarum*. Tomus primus. Holmiae: Officina Norstedtiana. [6] + 452 pp., 4 pls. <https://doi.org/10.5962/bhl.title.8973>
- Boheman, C.H. (1854) *Monographia Cassidarum*. Tomus secundus. Officina Norstedtiana, Holmiae. 506 pp., pls. 5, 6.
- Boheman, C.H. (1855) *Monographia Cassidarum*. Tomus tertius. Officina Norstedtiana, Holmiae. 543 pp., pl. 7.
- Boheman, C.H. (1857) *Catalogue of Coleopterous Insects in the collection of the British Museum*. Part IX. Cassididae. [1856], Trustees of the British Museum, London. 225 pp.
- Boheman, C.H. (1862) *Monographia Cassidarum*. Tomus quartus. Officina Norstedtiana, Holmiae. [4] + 504 pp.
- Borowiec, L. (1985) Asiatic Cassidinae (Coleoptera, Chrysomelidae) in Polish collections. *Polskie Pismo Entomologiczne*, 55, 25–38.
- Borowiec, L. (1987) Lectotype designations for some Aspidomorphini described by Weise (Coleoptera, Chrysomelidae, Cassidinae). *Polskie Pismo Entomologiczne*, 57, 413–415.
- Borowiec, L. (1990a) New records and new synonyms of Asiatic Cassidinae (Coleoptera, Chrysomelidae). *Polskie Pismo Entomologiczne*, 59, 677–711.
- Borowiec, L. (1990b) A review of the genus *Cassida* L. of the Australian region and Papuan subregion (Coleoptera, Chrysomelidae, Cassidinae). *Genus*, 1, 1–51.
- Borowiec, L. (1991) On the genus *Lorentzocassis* Spaeth, 1913 (Coleoptera: Chrysomelidae: Cassidinae). *Genus*, 2, 11–17.
- Borowiec, L. (1992) A review of the tribe Aspidomorphini of the Australian region and Papuan subregion (Coleoptera: Chrysomelidae: Cassidinae). *Genus* 3, 121–184.
- Borowiec, L. (1996) New records of Asiatic Cassidinae (Coleoptera: Chrysomelidae). *Annals of the Upper Silesian Museum in Bytom, Entomology*, 6–7, 5–47.
- Borowiec, L. (1998) *Megapyga minima*, n. sp. from Borneo (Coleoptera: Chrysomelidae: Cassidinae). *Serangga*, 3, 103–106.
- Borowiec, L. (1999a) *A World Catalogue of the Cassidinae (Coleoptera: Chrysomelidae)*. Biologica Silesiae, Wrocław. 476 pp.
- Borowiec, L. (1999b) A new species of *Notosacantha* Chevrolat from Sulawesi, Indonesia (Coleoptera: Chrysomelidae: Cassidinae). *Serangga*, 4, 7–10.
- Borowiec, L. (2001) New records of Asian and Australopapuan Cassidinae, with a description of five new species of *Cassida* L. from Thailand (Coleoptera: Chrysomelidae: Cassidinae). *Genus*, 12, 493–562.
- Borowiec, L. (2006) A new species of *Basiprionota* Chevrolat from Sumba, Indonesia (Coleoptera: Chrysomelidae: Cassidinae: Basiprionotini). *Genus*, 17, 245–248.
- Borowiec, L. (2009) New records of Asian and Australopapuan tortoise beetles (Coleoptera: Chrysomelidae: Cassidinae). *Genus*, 20, 435–484.

- Borowiec, L. & Świętojańska, J. (2001) Revision of the genus *Thlaspidula* Spaeth, 1901 (Coleoptera: Chrysomelidae: Cassidinae). *Annales Zoologici*, 51, 331–343.
- Borowiec, L. & Świętojańska, J. (2024) *Cassidinae of the world – An Interactive Manual* (Coleoptera: Chrysomelidae). Permanent electronic publication. Available from: <https://www.cassidae.uni.wroc.pl/katalog%20internetowy/index.htm> [Accessed February 23, 2025]
- Borowiec, L., Takizawa, H. & Świętojańska, J. (2013) Five new species of *Notosacantha* Chevrolat (Coleoptera: Chrysomelidae: Cassidinae) from Borneo, with a key to Bornean species and new faunistic data. *Zootaxa*, 3608, 161–177. <https://doi.org/10.11646/zootaxa.3608.3.1>
- Budi, A.S. & Świętojańska, J. (2025) Two new species of *Thlaspidula* Spaeth, 1901 (Coleoptera: Chrysomelidae: Cassidinae) from Sulawesi. *Zootaxa*, 5566, 391–396.
- Chaboo, C.S. (2007) Biology and phylogeny of the Cassidinae Gyllenhal sensu lato (tortoise and leaf-mining beetles) (Coleoptera: Chrysomelidae). *Bulletin of the American Museum of Natural History*, 305, 1–250. [https://doi.org/10.1206/0003-0090\(2007\)305\[1:BAPOTC\]2.0.CO;2](https://doi.org/10.1206/0003-0090(2007)305[1:BAPOTC]2.0.CO;2)
- Fabricius, J.Ch. (1775) *Systema Entomologiae, sistens insectorum classes, ordines, genera, species, adiectis synonymis, locis, descriptionibus, observationibus*. Flensburgi et Lipsiae: Libraria Kortii, [32] + 832 pp. <https://doi.org/10.5962/bhl.title.36510>
- Fabricius, J.Ch. (1801) *Systema Eleutheratorum secundum ordines, genera, species adiectis synonymis, locis, observationibus, descriptionibus*. I. Kiliae; Bibliopolii Academicis Novi, xxiv + 506 pp.
- Ganjari, L.E. (2016) Keanekaragaman dan Aktivitas Kumbang Kura-Kura (Tortoise) pada Tanaman Kangkung Pagar (*Ipomea Carnea*) di Madiun. *Widya Warta*, 2, 270–282.
- Gressitt, J.L. (1939) East Asian Hispinae and Cassidinae in the collection of the California Academy of Sciences (Coleoptera, Chrysomelidae). *Pan-Pacific Entomologist*, 15, 132–143.
- Gupta, D., Ghosh, P., Wani, I., Bhunia, D., Sonali, S. & Kumar, V. (2025) A comprehensive checklist and geographic distribution of Tortoise beetles (Coleoptera, Chrysomelidae: Cassidinae) in India. *Journal of Insect Biodiversity and Systematics*, 11(3), 543–600. <https://doi.org/10.61186/jibs.11.3.543>
- Hincks, W.D. (1952) The genera of the Cassidinae (Coleoptera: Chrysomelidae). *Transactions of the Royal Entomological Society of London*, 103, 327–358. <https://doi.org/10.1111/j.1365-2311.1952.tb01061.x>
- Hincks, W.D. (1953) Cassidinae from Sumba and Flores (Col. Chrysomelidae). *Verhandlungen der Naturforschenden Gesellschaft in Basel*, 64, 69–73.
- Integrated Taxonomic Information System (ITIS) (2025) *ITIS: Integrated Taxonomic Information System (online database)*. Available from <https://www.itis.gov> [Accessed October 10, 2025]
- Kimoto, S., Noerdjito, W. A. & Nakamura, K. (1995) Cassidinae of Java (Insecta: Coleoptera: Chrysomelidae). *Tropics*, 5, 101–114. <https://doi.org/10.3759/tropics.5.101>
- Mannerheim, C.G. von (1845) Lettre a S. E. Mr. Fischer de Waldheim ou relation d'un voyage fait en 1844, en Suède, en Danemarck et dans le nord de l'Allemagne. *Bulletin de la Société Impériale des Naturalistes de Moscou*, 17 [1844] (4), 844–872.
- Masters, G. (1889) Catalogue of the known Coleoptera of New Guinea, including the islands of New Ireland, New Britain, Duke of York, Aru, Mysol, Waigiou, Salwatty, Key, and Jobie. *Proceedings of the Linnean Society of New South Wales*, (2) 3, 1889 (1888), 271–334, 925–1002.
- Maulik, S. (1916) On Cryptostome beetles in the Cambridge University Museum of Zoology. *Proceedings of the Zoological Society of London*, 1916 (4), 567–589. <https://doi.org/10.1111/j.1096-3642.1916.tb02038.x>
- Maulik, S. (1919) Coleoptera. Chrysomelidae (Hispinae and Cassidinae). In: Shipley, A.E. (ed.) *The Fauna of British India including Ceylon and Burma*. London: Taylor and Francis, xi + 439 pp.
- Mohamedsaid, M.S. (2000) List of the non-Malaysian Chrysomelidae in the collection of UKM. *Serangga*, 5, 361–377.
- Mohamedsaid, M.S. (2006) An interesting discovery of the tortoise beetles *Aspidomorpha deusta* and *Silana farinosa* in Borneo (Coleoptera: Chrysomelidae: Cassidinae). *Malayan Nature Journal*, 59, 63–72
- Montrouzier, X. (1856) Essai sur la faune de l'île de Woodlark ou Moïou. *Annales des Sciences Physiques et Naturelles, d'Agriculture et d'Industrie, Deuxième Série*, 7 [1855] (1), 1–114.
- Myers, N., Mittermeier, R.A., Mittermeier, C.G., da Fonseca, G.A.B. & Kent, J. (2000) Biodiversity hotspots for conservation priorities. *Nature*, 403(6772), 853–858. <https://doi.org/10.1038/35002501>
- Nakamura, K. & Abbas, I. (1989) Seasonal change in abundance and egg mortality of two tortoise beetles under a humid-equatorial climate in Sumatra (Coleoptera, Chrysomelidae, Cassidinae). *Entomography*, 6, 487–495.
- New, T.R. (1998) *Invertebrate Surveys for Conservation*. Oxford University Press, Oxford. 252 pp.
- Noerdjito, W. A. & Nakamura, K. (1999) Population Dynamics of Two Species of Tortoise Beetles, *Aspidomorpha miliaris* and *A. sanctaerucis* (Coleoptera: Chrysomelidae: Cassidinae) in East Java, Indonesia. 1. Seasonal Changes in Population Size and Longevity of Adult Beetles. *Tropics* 8(4), 409–425. <https://doi.org/10.3759/tropics.8.409>
- Olivier, A.G. (1808) *Entomologie, ou histoire naturelle des insectes, avec leurs caractères génériques et spécifiques, leur description, leur synonymie et leur figure enluminée*. Coléoptères Tome sixième. Paris: Desray, [4] + 613–1104.
- Rahayu, S. (2022) Identification of insect pests of green eggplant (*Solanum melongena* L) in generative phase at agricultural zone of Pandak, Bantul, Yogyakarta. *Proceedings International Conference on Religion, Science and Education*, 1, 589–593.

- Rahayu, K.D., Thei, R.S.P. & Sarjan, M. (2023) Keragaman dan kelimpahan hama pada tanaman kangkung air (*Ipomea aquatic* F.) di Kabupaten Lombok Barat. *Agroteksos*, 33 (2), 645–653. <https://doi.org/10.29303/agroteksos.v33i2.968>
- Reid, C.A.M. (1997) Chrysomelidae from Kalimantan (Borneo) in the Museum of Zoology, Bogor, Indonesia. *Serangga*, 2, 29–47.
- Reid, C.A.M. (1998) The Chrysomeloidea of Taman Nasional Gede-Pangrango and environs, Jawa Barat, Indonesia. *Serangga*, 3, 269–315.
- Sekerka, L. (2009) *Notosacantha dammaropsi* sp. nov. from New Guinea (Coleoptera: Chrysomelidae: Cassidinae). *Annales Zoologici*, 59, 197–200. <https://doi.org/10.3161/000345409X464029>
- Sekerka, L. (2016) Taxonomic and nomenclatural changes in Cassidinae (Coleoptera: Chrysomelidae). *Acta Entomologica Musei Nationalis Pragae*, 56, 275–344.
- Sekerka, L. & Świętojańska, J. (2024) Cassidinae. In: Bezděk, J. & Sekerka, L. (eds) *Catalogue of Palaearctic Coleoptera*, Vol. 6/2/1, Chrysomeloidea II (Orsodacnidae, Megalopodidae, Chrysomelidae), Brill, Leiden-Boston, pp. 233–272.
- Simon Thomas, R.T. (1964) Some aspects of life history, genetics, distribution, and taxonomy of *Aspidomorpha adhaerens* (Weber, 1801) (Cassidinae, Coleoptera). *Tijdschrift voor Entomologie*, 107, 167–264.
- Spaeth, F. (1898) Beschreibung einiger neuer Cassididen nebst synonymischen Bemerkungen, 2. *Verhandlungen der Kaiserlich-Königlichen Zoologisch-Botanischen Gesellschaft in Wien*, 48, 537–543.
- Spaeth, F. (1900) Beitrag zur Cassiden Fauna von Sumatra. *Annales de la Société Entomologique de Belgique*, 44, 20–24.
- Spaeth, F. (1901) Neue Cassiden aus Sumatra gesammelt von Dr. H. Dohrn. *Stettiner Entomologische Zeitung*, 62, 3–13.
- Spaeth, F. (1904) Zur Kenntnis der Cassiden des Ostindischen Archipels. *Annali del Museo Civico di Storia Naturale di Genova*, 41, 69–79. <https://doi.org/10.5962/bhl.part.24158>
- Spaeth, F. (1912) One new genus and some new species of Cassidae from Borneo, with a list of all the species at present known from that Island. *Sarawak Museum Journal*, 1, 113–122.
- Spaeth, F. (1913a) Cassididae. Résultats de l'Expédition Scientifique Néerlandaise a la Nouvelle-Guinée. *Nova Guinea*, 9, 3, 447–452.
- Spaeth, F. (1913b) Studien über die Gattung *Hoplionota* Hope und Beschreibung einer verwandten neuen Gattung. *Verhandlungen der Kaiserlich-Königlichen Zoologisch-Botanischen Gesellschaft in Wien*, 63, 381–534.
- Spaeth, F. (1914a) Zur Kenntnis der indischen Cassidinen. *Deutsche Entomologische Zeitschrift*, 1914 (5), 542–568. <https://doi.org/10.1002/mmnd.48019140506>
- Spaeth, F. (1914b) Chrysomelidae: 16. Cassidinae. In: Schenkling, S. (ed.) *Coleopterorum Catalogus, Pars 62*. W. Junk, Berlin, pp. 1–182 pp
- Spaeth, F. (1915a) Neue Cassidinen (Coleoptera). *Stettiner Entomologische Zeitung*, 76, 265–290.
- Spaeth, F. (1915b) Ueber einige australische Cassidinen (Col.). *Entomologische Mitteilungen*, 4, 235–240.
- Spaeth, F. (1919) Neue Cassidinae aus der Sammlung von Dr. K. Brancsik, dem Ungarischen National-Museum und meiner Sammlung. *Annales Historico-Naturales Musei Nationalis Hungarici*, 17, 184–204.
- Spaeth, F. (1925) Die Gattung *Priopecta* Hope (Coleoptera, Cassididae). *Philippine Journal of Science*, 28, 379–437.
- Spaeth, F. (1926a) Fauna Buruana. Coleoptera, Subfam. Cassidinae. *Treubia*, 7, 307–310. <https://doi.org/10.14203/treubia.v7i3.1724>
- Spaeth, F. (1926b) Fauna sumatrensis (Beitrag Nr. 27). Cassidinae (Col.). *Supplementa Entomologica*, 14, 116–119.
- Spaeth, F. (1926c) Neue Cassidinen des Rijksmuseums in Leiden, des British Museums und meiner Sammlung. *Zoologische Mededeelingen*, 9(1), 1–15.
- Spaeth, F. (1926d) Mitteilungen ueber die Cassidinen des Prager Nationalmuseums (Col. Chrysomelidae). *Acta Entomologica Musei Nationalis Pragae*, 4, 81–96.
- Spaeth, F. (1926e) Beschreibung neuer Cassidinen. *Bulletin Mensuel de la Société des Naturalistes Luxembourgeois, Nouvelle Série*, 20(6/10), 47–60.
- Spaeth, F. (1932) Neue Cassidinen (Col. Chrysom.). *Stettiner Entomologische Zeitung*, 93 (2), 182–204.
- Spaeth, F. (1933a) Neue Cassidinen von den Philippinen-Inseln (Coleoptera; Chrysomelidae). *Philippine Journal of Science*, 51 (4), 495–506.
- Spaeth, F. (1933b) Bestimmungstabelle der *Hoplionota*-Arten (Col. Chrys. Cass.) von Australien, Asien und den dazugehörigen Inseln. *Wiener Entomologische Zeitung*, 50, 117–141.
- Spaeth, F. (1935) Mitteilungen über neue oder bemerkenswerte Cassidinen aus dem Senckenberg-Museum (Ins. Col.). *Entomologische Rundschau*, 53, 65–69, 93–95.
- Spaeth, F. (1940a) Über einige neue Cassidinen aus Indochina. *Entomologisk Tidskrift*, 61, 10–13.
- Spaeth, F. (1940b) Vier neue *Hoplionota*-Arten (Col. Cassididae). *Annals and Magazine of Natural History*, 5 (11), 507–512. <https://doi.org/10.1080/00222934008527068>
- Świętojańska, J. (2001a) Two new species of *Notosacantha* Chevrolat from Sumatra (Coleoptera: Chrysomelidae: Cassidinae). *Genus*, 12, 51–57.
- Świętojańska, J. (2001b) A Revision of the *Ribe* *Aspidimorphini* of the Oriental Region (Coleoptera: Chrysomelidae: Cassidinae). *Biologica Silesiae*, 318 str. + 18 tabl.
- Świętojańska, J. (2001c) Four new species of *Notosacantha* Chevrolat from Borneo (Coleoptera: Chrysomelidae: Cassidinae). *Genus*, 12, 335–347.

- Świętojańska, J. (2002) *Notosacantha riedeli*, a new species from Sulawesi (Coleoptera: Chrysomelidae: Cassidinae). *Genus*, 13, 353–356.
- Świętojańska, J. (2006) A new species of *Notosacantha* Chevrolat from Halmahera, Indonesia (Coleoptera: Chrysomelidae: Cassidinae). *Genus*, 17 (3), 363–367.
- Świętojańska, J. & Borowiec, L. (1999) Two new species of *Notosacantha* Chevrolat from the Oriental Region (Coleoptera: Chrysomelidae: Cassidinae). *Genus*, 10, 421–426. <https://doi.org/10.3161/000345411X584870>
- Świętojańska, J. & Borowiec, L. (2013) A new species of *Aspidimorpha* Hope from Sumbawa, Indonesia (Coleoptera: Chrysomelidae: Cassidinae: Aspidimorphini). *Genus*, 24, 217–221.
- Świętojańska, J. & Stach, M. (2011) Two new species of *Notosacantha* Chevrolat (Coleoptera: Chrysomelidae: Cassidinae) from the Oriental region. *Annales Zoologici*, 61, 421–426. <https://doi.org/10.3161/000345411X584870>
- von Rintelen, K., Arida, E. & Häuser, C. (2017) A review of biodiversity-related issues and challenges in megadiverse Indonesia and other Southeast Asian countries. *Research Ideas and Outcomes*, 3, e20860. <https://doi.org/10.3897/rio.3.e20860>
- Wagner, B. (1877) Cassididae. *Mittheilungen des Münchener Entomologischen Vereins*, 1, 49–79.
- Wagner, B. (1881) Cassididae. *Mittheilungen des Münchener Entomologischen Vereins*, 5, 17–85.
- Weber, F. (1801) *Observationes entomologicae, continentis novorum quae condidit generum characteres, et nuper detectarum specierum descriptiones*. Kiliae: Bibliopoli Academici Novi, xii + 116 + [1] pp. <https://doi.org/10.5962/bhl.title.8639>
- Weise, J. (1892a) *Coptocyclus catenata* Boh. *Deutsche Entomologische Zeitschrift*, 1892, 352. <https://doi.org/10.1002/mmnd.48018920115>
- Weise, J. (1892b) Chrysomeliden und Coccinelliden von der Insel Nias, nebst Bemerkungen über andere, meistens südostasiatische Arten. *Deutsche Entomologische Zeitschrift*, 1892 (2), 385–400. <https://doi.org/10.1002/mmnd.48018920128>
- Weise, J. (1897) Kritisches Verzeichniss der von Mr. Andrewes eingesandten Cassidinen und Hispinen aus Indien. *Deutsche Entomologische Zeitschrift*, 1897 (1), 97–150. <https://doi.org/10.1002/mmnd.48018970120>
- Weise, J. (1899) Einige neue Cassidinen-Gattungen und Arten. *Archiv für Naturgeschichte*, 65, 268–273.
- Weise, J. (1901) *Coptocyclus aruensis* n. sp. *Deutsche Entomologische Zeitschrift*, 1901, 364.
- Weise, J. (1910) Verzeichniss von Coleopteren aus den Philippinen, nebst zwei neuen Arten aus Niederländisch Ostindien. *Philippine Journal of Science*, 5 (2), 139–148.
- Weise, J. (1912) Beitrag zur Kenntnis der Chrysomeliden. *Archiv für Naturgeschichte, Abteilung A*, 78 (2), 76–98.
- Whittaker, R.J., Triantis, K.A. & Ladle, R.J. (2008) A general dynamic theory of oceanic island biogeography. *Journal of Biogeography*, 35, 977–994. <https://doi.org/10.1111/j.1365-2699.2008.01892.x>

فهرست مشروح سوسک‌های لاک‌پشتی (Coleoptera, Chrysomelidae: Cassidinae) اندونزی و یافته‌های جدید فونستیک از موزه جانورشناسی بوجور

آنگ ستیو بودی^۱، یولانتا شویتویانسکا^۲

۱ موزه جانورشناسی بوجور، مرکز تحقیقات بیوسیستماتیک و تکامل، آژانس ملی تحقیقات و نوآوری، سببونگ، بوجور، جاوه غربی، اندونزی.
۲ دپارتمان تنوع زیستی و تاکسونومی تکاملی، دانشگاه وروتسواو، لهستان.

نویسندهٔ مسئول: آنگ ستیو بودی | anan013@brin.go.id

چکیده: در این مقاله، فهرست مشروح سوسک‌های لاک‌پشتی از کشور اندونزی ارائه شده است. این فهرست شامل اطلاعات منتشر شده و همچنین نمونه‌های بررسی شده از موزه جانورشناسی بوجور (Zoologicum Bogoriense - MZB) می‌باشد. در مجموع حضور ۱۴۶ گونه که نماینده ۱۴ جنس هستند، مستند شده‌اند که شامل ۳۰ رکورد جدید جزیره‌ای و هشت رکورد جدید کشوری برای اندونزی می‌باشد. برای هر گونه، اطلاعات تایید شده از انتشار، سوابق تاکسونومیک و مراجع مربوطه ارائه شده است. بر اساس این تحقیق، آمار گونه‌های ثبت شده در اندونزی به‌روز شده و منابع پراکنده و اطلاعات نمونه‌های موزه‌ای یکپارچه‌سازی شد این داده‌ها، زمینه مطالعات آینده در زمینه تاکسونومی و جانورشناسی این گروه از بندپایان در را منطقه فراهم می‌کند.

ویراستار علمی
هیوا ناصرزاده

دریافت: ۲۵ آذر ۱۴۰۴

ویرایش: ۲۸ فروردین ۱۴۰۵

پذیرش: ۰۹ اردیبهشت ۱۴۰۵

انتشار: ۱۸ خرداد ۱۴۰۵

واژگان کلیدی: چک‌لیست، گزارش انتشار، تنوع حشرات، سوسک‌های برگ‌ی، نمونه‌های موزه‌ای